



OPEN ACCESS

End-of-life and immediate postdeath acute hospital interventions: scoping review

Laura Green ,¹ Adele Stewart-Lord,² Lesley Baillie³

► Additional supplemental material is published online only. To view, please visit the journal online (<http://dx.doi.org/10.1136/spcare-2021-003511>).

¹Faculty of Nursing, Midwifery and Social Work, University of Manchester, Manchester, UK

²Department of Allied Health Sciences, London South Bank University, London, UK

³Florence Nightingale Foundation Chair, London South Bank University, London, UK

Correspondence to

Dr Laura Green, The University of Manchester, Manchester, Manchester, UK; laura.green-3@manchester.ac.uk

Received 20 December 2021

Accepted 28 June 2022



© Author(s) (or their employer(s)) 2022. Re-use permitted under CC BY-NC. No commercial re-use. See rights and permissions. Published by BMJ.

To cite: Green L, Stewart-Lord A, Baillie L. *BMJ Supportive & Palliative Care* Epub ahead of print: [please include Day Month Year]. doi:10.1136/bmjspcare-2021-003511

ABSTRACT

Background Hospital remains the most common place of death in the UK, but there are ongoing concerns about the quality of end-of-life care provision in this setting. Evaluation of interventions in the last days of life or after a bereavement is methodologically and ethically challenging.

Aim The aim was to describe interventions at the very end of life and in the immediate bereavement period in acute hospitals, with a particular focus on how these are evaluated.

Method A scoping review was conducted. Studies were restricted to peer-reviewed original research or literature reviews, published between 2011 and 2021, and written in the English language. Databases searched were CINAHL, Medline and Psycinfo.

Results From the search findings, 42 studies were reviewed, including quantitative (n=7), qualitative (n=14), mixed method (n=4) and literature reviews (n=17). Much of the current research about hospital-based bereavement care is derived from the intensive and critical care settings. Three themes were identified: (1) person-centred/family-centred care (memorialisation), (2) institutional approaches (quality of the environment, leadership, system-wide approaches and culture), (3) infrastructure and support systems (transdisciplinary working and staff support). There were limited studies on interventions to support staff.

Conclusion Currently, there are few comprehensive tools for evaluating complex service interventions in a way that provides meaningful transferable data. Quantitative studies do not capture the complexity inherent in this form of care. Further qualitative studies would offer important insights into the interventions.

BACKGROUND

The death of a loved one is associated with increased morbidity and mortality in both the short-term and long term,

particularly in the event of unexpected bereavement.¹ Hospital remains the most common place of death in the UK^{2 3} with up to a third of hospital inpatients being thought to be in the last year of life at any one time.⁴ However, there are ongoing concerns about the quality of end-of-life care provision in this setting. When patients die in the hospital setting, they and their families may receive input from a variety of palliative and support services, both generalist and specialist. Challenges in end of life and bereavement care in acute settings are well established but services remain understudied^{5–7} and notably, the services that provide support at this time are not well evaluated.⁸ What is known is that patients and their loved ones express a need for clear communication about death,⁹ timely provision of information¹⁰ and compassionate support before and after the death.¹¹

A small proportion of people who die in hospital are known to specialist palliative care services, but not all.¹² Deaths take place in every clinical area and some of these are sudden or unexpected. Much end-of-life support is provided by staff who are not specialists in palliative and end-of-life care. Effective interventions that offer meaningful support to patients, families and staff must take this into consideration. Evaluation of interventions in the last days of life or after a bereavement is methodologically and ethically challenging,¹³ and consequently there is little evidence on which to base generalist palliative care interventions. Little is known about the context and mechanisms of such services, and the circumstances in which they achieve specific outcomes. Services not directly involved in clinical care, such as chaplaincy, face particular challenges in evaluation especially in multicultural settings.¹⁴ The benefits of aspects of care such as enabling relatives

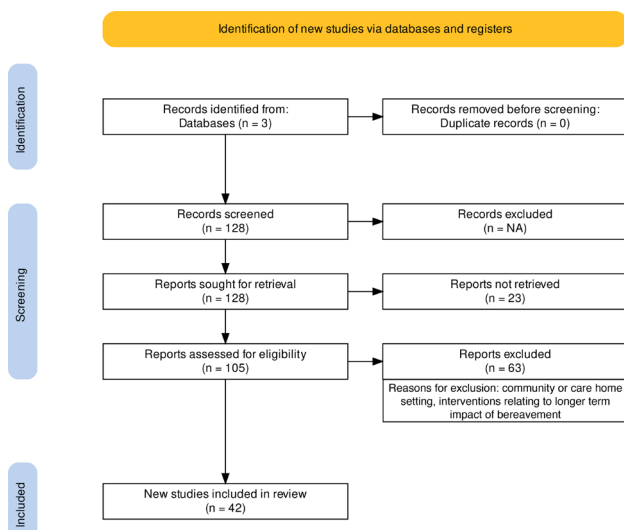


Figure 1 Preferred Reporting Items for Systematic Reviews and Meta-Analyses.

to visit their loved one after death are also difficult to evaluate empirically.¹⁵

Aim and objectives

The motivation for this review arises from the need to appraise the current state of evidence relating to interventions and services in the last days of life and shortly after death. Because this is a broad area of study rather than a discrete intervention, a scoping review was considered the most appropriate approach. Scoping reviews generally aim to assess the potential size and scope of available research literature and identify the extent of research evidence.¹⁶ The aim of this scoping review was to describe services and interventions at the very end of life and in the immediate bereavement period in acute hospitals, with a particular focus on how these are evaluated.

This review has been reported according to the Preferred Reporting Items for Systematic Reviews and Meta-Analyses (PRISMA) extension for Scoping Reviews as listed in the Enhancing the Quality and Transparency Of Health Research network (online supplemental file 1).

METHOD

The scoping review followed Arksey and O'Malley's five-stage framework¹⁷: identifying the scope of the review, identifying relevant studies, selecting the studies, documenting data and reporting the results. The two central questions guiding the review were 'what services and interventions exist in acute hospitals for supporting patients, families and staff in the period immediately before and after death?' and 'what methods are used to evaluate these?'

We were particularly interested in research related to 'immediate' interventions, where individuals or professionals become involved at the time of death

Table 1 Scoping review criteria

Inclusion criteria	Exclusion criteria
Studies set within acute hospital care setting	Studies based in community, long-term or care home setting
Studies involving end-of-life care and bereavement	Studies focusing on specialist palliative care interventions for example, symptom control
Interventions or services	Disease or condition-specific interventions
Primary research, systematic reviews	

or immediately afterwards. The scope of this review includes research that explores the mechanisms of bereavement interventions (these may be theoretical or empirical), the impact of care before and at the time of death on outcomes related to family and staff, and the contextual conditions that facilitate or impede the provision of such care. Outcomes include both intended and unintended consequences of the interventions included.

The search strategy included palliative, end-of-life care and bereavement. There were two issues concerning timescales that influenced the scope of the study. The first relates to the period considered to be the 'end of life'. In UK policy,¹⁸ the 'end-of-life' is generally taken to refer to the last 12 months of life and therefore much of the literature relates to this period. Further, the literature relating to bereavement interventions tends to concentrate on longer-term interventions rather than support at the time of death and immediately afterwards. For the purposes of this study, we were interested in the last days of life, the time around death and immediately afterwards. Therefore, we used a 'sift-and-sort' approach to identify the literature that potentially included studies from outside this period, but only if it provided insight into service evaluation that could be transferable to the period of interest.

A search was conducted using the following search terms:

Bereavement OR end-of-life OR palliative OR care after death

AND

Intervention OR service OR support OR strateg*

AND

Impact OR outcome OR mechanism OR evaluation OR realist

Studies were restricted to peer-reviewed original research or literature reviews, between the years 2011 and 2021, written in the English language. Databases searched were CINAHL, Medline and Psycinfo. The PRISMA diagram (figure 1) summarises the search strategy, and table 1 describes inclusion and exclusion criteria. Following retrieval of 128 records, a process of sifting and sorting was undertaken. Although the focus of the review is on acute hospital care, this was

not a restriction in the literature search because we wished not to exclude relevant studies from settings such as hospice. This was to ascertain their methods of evaluation rather than to examine the interventions themselves. On applying sifting and sorting criteria, there were no additional methods used outside the acute hospital setting so it was decided not to include those studies reporting on other care settings.

Overall, 2421 studies were identified in the initial search. Duplicates were removed, titles were screened and a total of 128 study abstracts were reviewed for inclusion. Additional sifting and sorting criteria were applied. Studies looking at sudden and unexpected death as well as expected death were included, recognising that the needs of families and staff will vary according to the nature of the loss. Because the focus of the review is on care immediately before and after death, studies on longer-term bereavement support were excluded, unless they specifically discussed approaches to service evaluation. Studies that focused on the community and care home setting were excluded, as the review aimed to look at what works in the acute healthcare context.

RESULTS

Following the original search and a subsequent process of sifting and sorting, 42 studies were selected for inclusion. Online supplemental table 1 summarises the studies, including methods and key findings, and indicating the international nature of the studies selected. Of these, 7 were quantitative, 14 were qualitative, 4 were mixed methods and the remaining 17 were literature reviews. Of the mixed method studies, one was a critical realist evaluation. Most of the quantitative studies were satisfaction questionnaires or surveys. Nine studies reported on paediatric end of life and bereavement care.

To assist in a structured approach to findings, and to inform the development of our planned realist evaluation, three themes were identified: person and family centred care, institutional approaches and infrastructure. First, the evaluation methods of the interventions are summarised.

Evaluation methods

In terms of methods of evaluation, the literature highlights a broad range of methods, including self-devised questionnaires, qualitative interviews and the use of data collection instruments such as grief inventories and depression scales. Much research on bereavement focuses on long-term interventions and there is next to no evidence to support practices in the immediate aftermath of death. In many cases, information is collected at a single time point—on completion of the programme or intervention. Across both adult and children's bereavement services, formal evaluation appears to be ad hoc and may not provide the quality of information required for robust service development.

An examination of how bereavement programmes were evaluated identified 38 studies that reported specifically on approaches to bereavement service evaluation.¹⁹ Outcomes were generally related to use of crisis services, participation in ongoing bereavement support groups and identification of those who would benefit from services. The included studies primarily used questionnaires or surveys for data collection. More detail on these approaches is provided within the themes below.

Patient-centred/Family-centred care

This theme contains studies that reported on how individuals experience end of life and bereavement care interventions, including families and loved ones. The interventions include actions to support memorialisation, such as creation of mementoes (letters, pictures), hand and lip prints or locks of hair and provision of comfort items such as twinned knitted hearts, one of which remains with the deceased person while the other is kept by loved ones. The interactions that take place in the context of end of life and bereavement care are a key consideration in terms of how they contribute to the overall experience. This relates not only to the kinds of therapeutic relationships required when caring for patients and families but also to how staff work together to provide compassionate care. This theme includes the interpersonal aspects of interventions and how they are evaluated.

The studies report on family experiences, both directly and as a proxy for patient experience. In the UK, families' experiences of end-of-life care have been evaluated using satisfaction surveys, with one of the most prominent modes of data collection in the UK being the 'Views of Informal Carers—Evaluation of Services' ('VOICES') survey.^{20–22} This retrospective quantitative survey includes data relating to demographics, the quality of clinical care, covering issues such as compassionate communication and symptom control. There are also free-text questions to gather descriptive data. The survey is recommended as best practice in enhancing hospital-based end-of-life care,²³ and has been widely used on institutional, Trust and national levels to support and inform service development. However, while a profile of the quality of end-of-life care is essential, the VOICES questionnaire provides minimal information about what works, for whom and in what circumstances.

Efstathiou *et al*²⁴ described nine bereavement interventions within the literature, including personal mementos, condolence letters, debriefs for staff and story-telling. The quality of evidence of effectiveness is considered weak and not generalisable; the success (or otherwise) of such interventions appears to be highly dependent on the role and way such interventions are delivered. There is some evidence that acts of remembrance and memorialisation are valued by bereaved family members.^{25–29} These studies have primarily used

qualitative methods to find out families' perceptions of having received mementoes (such as ECGs, locks of hair or handprints) following the death of a loved one.

There appears to be a clear role for hospital-based bereavement care, particularly in the support of families of children.³⁰ Much of the current research about hospital-based bereavement care is derived from the intensive care unit (ICU) and critical care unit settings, where deaths can be unexpected and sudden. A scoping review of memory-making in adult ICU³¹ identified seven studies presenting research on this intervention, using both qualitative and quantitative methods. The acceptability and comfort offered by the interventions was largely ascertained by proxy, for example, by asking nursing staff for their opinions, rather than directly from families.

Several studies examining family perceptions of care made use of surveys and questionnaires for the purpose of evaluation.^{32–34} Some questionnaires had been developed specifically to evaluate a single service, while other studies made use of existing, validated tools such as the 'Satisfaction With Bereavement Experience Questionnaire' and the 'Quality of Dying and Death in the Intensive Care Unit survey'.³⁵ One of the challenges in using quantitative instruments for the purposes of evaluating services is that they do not capture the complexity inherent in this form of care. For example, of 52 studies identified in a review by Garstang *et al*³⁶ on parents' needs following sudden death of a child, fewer than a quarter used qualitative methods.

While quantitative instruments such as surveys play an important role in evaluation, avoiding some of the ethical complexity of more iterative research approaches, they can limit the level of detail obtained, in particular the generation of new insights into how an intervention might work in particular situations. A further consideration is the variable reliability in different survey instruments in different populations. Evaluations may be prone to bias as users of such services are a self-selecting group, so findings of such studies may not indicate the value of interventions for people who decline or are not afforded access to services, and who may be highly vulnerable to the adverse impact of grief.¹³

The use of qualitative methods provides a more nuanced insight into these kinds of individual interventions. In the field of paediatric intensive care, Bloomer *et al*^{37–39} describe how observations of practice reveal several ways in which nurses support families in the period leading up to a child's death. Again, respecting the child as a person and collecting and creating mementoes appears to be an important part of nursing care, and appears to empower parents and families to be a part of the process rather than just onlookers.

There is little research that focuses specifically on the interpersonal nature of care in the context of specific interventions. One small Australian study by

Clark *et al*¹¹ highlights the ramifications of the interpersonal encounters between them and the health-care providers. The study combined the use of the Quality of Death and Dying tool with semistructured interviews to evaluate experiences of bereavement in the acute hospital settings. Two studies sought to describe the role of staff in providing immediate care following a death. Raymond *et al* undertook a systematic review⁴⁰ and suggested that nurses provide vital patient-centred and family-centred care at the end of life and that this continues into the bereavement period. Naef *et al*⁴¹ described ways in which health professionals in Switzerland provide immediate support following a death in acute and psychiatric care settings, via a cross-sectional online questionnaire (n=196). Roles included enabling viewing of the deceased, sending condolence cards, providing information on funerals and other support, and referring onwards. Nurses provided more immediate care, while physicians were involved in screening for bereavement risk factors. Notably, participants observed that such aspects of their roles are rarely evaluated and there is a need for support and education. The value of volunteers in the provision of hospital end-of-life support was the subject of a literature review by Bloomer and Walshe,⁴² with the emphasis being on 'being with' the dying person in a non-specialist capacity. The psychosocial aspect of the role was considered to be particularly valuable, alongside the clinical care provided by the core healthcare team.

Several studies report on interventions that sustain or maintain personhood in the face of dying. A systematic review of 21 studies by Kochen *et al*⁴³ summarises a range of interventions to support families when a child dies. The studies point to the importance of acknowledging and recognising a child who has died through the creation of keepsakes by hospital staff. In general, the literature in this area suggests that this is appreciated by bereaved loved ones. However, the authors conclude that the interventions lacked an empirical evidence base and suggested that one approach to evaluating them is to do so against theoretical concepts such as theories of grief and loss.

Institutional approaches

Many of the interventions described in the theme 'Person-centred/Family-centred care' were implemented on an individual ward level, rather than across entire institutions. This theme addresses changes across institutions, which were perceived to impact on the quality of end of life and bereavement support.

The 'VOICES' survey reports on the quality of the hospital environment and repeatedly, the importance of privacy, dignity and sensitive care after death are highlighted.²¹ Coombs *et al*'s⁴⁴ scoping review of family experiences of end-of-life care in ICU identified the impact of flexibility in terms of family perceptions of support, including hospital parking, visiting hours

and privacy. Particularly in critical care of children, the importance of the hospital environment is emphasised, such as in the grounded theory study by Butler *et al.*⁴⁵ Moss *et al.*⁴⁶ note that three existing randomised controlled trials of bereavement interventions omitted key bereavement outcomes, including communication and connectedness, finding balance, and relationships and social functioning.

Where service developments take place across entire institutions, it is important to obtain information about staff perceptions. Walker and Deacon⁴⁷ attest to the impact on staff of caring for the suddenly bereaved. Through a series of interviews with staff, they identified that staff find this role simultaneously important and a source of unrest. Participants in the study identified the context of care as a key influencing factor in staff's perceptions of this aspect of their role; this includes attitudes to death and dying, professional support from colleagues, and the culture of care on that ward or shift. Participants indicated that care provision was less challenging when departmental guidelines about visiting times and numbers of visitors were relaxed. Participants identified a number of aspects of this type of care that they perceived to be rewarding, including 'person-centred moments', informal debriefs with colleagues and the ability to establish priorities of care with families and members of the multidisciplinary team. Bristowe *et al.*⁴⁸ identified tangible changes in practice from the views of relatives when new models of care such as the Amber care Bundle were put into practice, notably in relation to the effectiveness of open and honest communication from clinicians.

A review by Harrop *et al.*⁴⁹ appraised bereavement support during the COVID-19 pandemic, identifying that organisational culture and prioritisation of bereavement care across the entirety of the institution is highly valued by staff in those clinical settings where death occurs.

Bristowe *et al.*⁵⁰ examined healthcare professionals' views of a complex intervention to improve care towards the end of life (the "AMBER" care bundle) and although the intervention itself relates to decision-making in relation to escalation of treatment and advance care planning, both of which fall somewhat outside the remit of the review and fit more with the role of the specialist palliative care team, this is a useful study in terms of looking at approaches to evaluation for complex interventions relating to the end of life. Understanding perceptions can help to shape implementation plans and education to ensure consistent use of a service or model. One of the findings of Bristowe's evaluation was that the implementation of the AMBER care bundle appeared to have an impact on staff through serving a symbolic purpose—it indicated that the patients in receipt of the intervention were at a particular point on their illness trajectory (in this case, at a point where recovery is uncertain) and the fact of

being identified as an appropriate patient for the use of the bundle led to staff awareness of the wider context of their situation becoming apparent. This idea of symbolic relevance may be an important element of large-scale changes in institutions.

Walsh *et al.*⁵¹ undertook an evaluation of a whole-hospital approach bereavement services through secondary analysis of qualitative data from focus groups with bereaved people and staff (n=21). The approach they evaluated took place in one Irish hospital and included appointment of a dedicated bereavement coordinator, whose role included staff support and training across the institution. Improved practices in a number of areas were identified, such as the establishment of 'memory bags', closer working between services such as organ transplantation, ward and mortuary staff and bereavement care coordination. Staff reported a sense of pride in the development of the bereavement services. The central role of management and leadership was also identified as contributing to the success of the service changes.

Using a case-study approach to evaluation can help to make sense of large-scale innovations. Della Penna *et al.*⁵² undertook a quality improvement study of an inpatient palliative care service across a large health-care organisation in the USA. Through interviews with national, regional and local leaders, a number of factors were identified that were thought to contribute to the widespread uptake of the innovation across the organisation. Alongside evidence of improved patient satisfaction (as identified through surveys), the impact of leadership and support on creating a change in culture appears to be pivotal.⁵³

Infrastructure and support systems

This theme addresses interventions that appear to act on service infrastructure and support systems. In contrast to the 'institutions' theme above, they propose ways in which support systems can be strengthened through service development.

Observational research suggests that acute hospital staff may need support after patient deaths, particularly around sudden or unexpected deaths³⁸; a need for education alongside the intervention has been established in other evaluations of end-of-life care innovations. The need for support for staff is well established^{38 54 55} particularly in those clinical settings where there are more unexpected or traumatic deaths.^{47 56} There are times when staff need immediate advice and support in relation to unfamiliar or particularly challenging end-of-life situations. Role-modelling and expertise-in-action may therefore also be an important contextual factor in the acceptability and action of the individuals supporting patients and their loved ones.³⁸ There is little research on interventions to support staff in the immediate aftermath. A small, anonymised survey on a 'sacred pause' in a single ICU

in the USA suggested taking time to reflect on deaths permits closure and builds resilience within the team.⁵⁷

Shariff *et al.*'s narrative overview of ICU nurses⁵⁵ focused on the needs of the 'suddenly bereaved', and the particular challenges that this poses both to relatives and to the staff providing care. An ethos of caring support between staff was seen as fundamental to being able to enact this difficult part of the job. Contextual factors that impeded the provision of care included manpower resources, the conflicting demands of other patients and the brevity of the encounter with the person who has died and their families. Where death had not been discussed, or there was conflicting information provided by members of the multidisciplinary team, staff reported finding bereavement care more difficult as death felt more like a failure and was unanticipated. The literature identified in Shariff *et al.*'s review⁵⁵ further supported the importance of small acts of humanity—making a cup of tea, providing physical and temporal space, remembrance and gentle conversation—on the experiences of the suddenly bereaved.

Transdisciplinary working is generally considered to be an important component of the success of services around the end of life, given that it is a time of such uncertainty and unpredictability, with patients often requiring input from a variety of services in a variety of care settings.⁵⁸ Efstathiou *et al.*⁵⁹ undertook a realist evaluation of a coordinated end-of-life care service. They concluded that the service's acceptability and success was partly related to the way in which expectations about pre-existing services and traditional roles were challenged. However, the authors also considered that challenging traditional boundaries brought with it the need to establish and maintain clear and realistic expectations, as well as investment in recruiting, educating and developing the workforce.

Research that incorporates observation of service provision has had somewhat more success in capturing the kinds of mechanisms and contexts of care at this time of life. Woodthorpe and Komaromy⁶⁰ explored the role of mortuary staff in hospital-based bereavement care services through undertaking an ethnographic study of one mortuary team. The study included observation and interviews, and participants were keen to describe the barriers and facilitators to the provision of mortuary services. They challenged existing perceptions that the dead person's body should be kept hidden, suggesting instead that it is important to promote visibility of death and dying to counter stigma. Becoming more integrated into multidisciplinary teams was a common wish expressed by participants, as well as recognition for their 'bridging' role between clinical care of the living person, and care of the dead person. This study also describes the use of interventions such as enabling viewing of the deceased person³⁴ but did not provide information on how this is valued by the bereaved. A qualitative approach, such as that taken by Chapple and Ziebland,¹⁵ is able to

provide insight into relatives' perceptions of being able to view the body of a deceased loved one following traumatic death.

Structural features of organisations and institutions have not been well evaluated in terms of their impact on end-of-life care and bereavement. It is difficult to evaluate cost-effectiveness, not least because of the lack of clarity about outcome measures.⁶¹ One example identified in this review was a realist evaluation of a single-point coordinated end-of-life care service,⁵⁹ which suggested that several mechanisms contributed to success: the presence of coordinated services, the recruitment and development of the workforce, articulation of clear roles and the management of expectations. One approach to evaluate effectiveness of an intervention is to investigate the impact of an intervention on a particular outcome. In a stepped-wedge cluster trial by Aoun *et al.*,⁶² researchers investigated whether involvement of palliative care before death had an impact on whether the patient achieved their preferred place of death, and how carers perceived their level of grief. These findings in end-of-life care are mirrored in a recent narrative review on bereavement by Harrop *et al.*,⁴⁹ examining the relative success of elements of systems approaches to mass bereavement. The latter highlighted that those characteristics of successful system-level responses were that they were proactive and centrally organised, with an emphasis on psychosocial support. It is perhaps unsurprising that the elements of success in end of life and bereavement care show such overlap.

DISCUSSION

It is essential that services are evaluated to ensure efficiency and efficacy of provision, but evaluation of end of life and bereavement services is notoriously challenging. In part this is an inevitable consequence of the ethical, logistical and theoretical obstacles inherent in trying to evaluate services at such a potentially vulnerable time. Undertaking service evaluation with bereaved family members and service users presents challenges such as the appropriateness of asking for their time, the reliability of recall under stress and the lack of other comparable experiences on which to base their opinions. Further, it is important to distinguish between satisfaction and the effectiveness of an intervention.

Satisfaction surveys as a measure of effectiveness of interventions are problematic.¹⁴ If provided to a bereaved person too soon, there is no means of evaluating the enduring effectiveness of support provided to families along the trajectory of their experiences. If administered too late, bereaved loved ones' experiences of grief may be shaped by any number of factors additional and extrinsic to the support provided around the time of death—for example, existing support networks, resilience factors, support from other health and social care services.

Further, there are theoretical difficulties in understanding what constitutes efficacy of interventions at such a sensitive time. It is not possible to undertake empirical research and so there is no way to compare interventions and services with one another. There are no studies reporting on patient experiences, likely due to practical and ethical obstacles, although observational research may provide a valuable means of evaluation here. Current MORECare guidance⁶³ on evaluating end-of-life care services recommends the use of research designs that extend beyond randomised trials and mixed methods to capture the nuanced nature of complex interventions, including paying attention to implementation aspects of services.

Among other indicators of success are the perceptions of family members and professionals, and satisfaction surveys. Dias *et al*⁸ appraised the quality of research relating to end-of-life care processes and outcomes in a hospital setting, highlighting that of 416 studies meeting eligibility criteria for evaluation the majority (n=351) were descriptive and of those that evaluated interventions, just 18 met the Effective Practice and Organisation of Care taxonomy design criteria. The use of stakeholder views, while providing valuable evaluation for individual services, does not necessarily provide a sense of transferability. Elements of a service that work in one context may be less effective or less well received in another context, as demonstrated by the attempt to implement a US-based evaluation of chaplaincy services in a multicultural UK context.¹⁵ A stakeholder engagement event reported by Harrop *et al*⁴⁹ sought to clarify a set of outcomes for evaluating support received by bereaved people, identifying the importance of communication and connectedness, finding meaning and finding balance between grief and life moving forwards. Although this approach to developing outcomes is valuable, the stakeholders were those who had been involved with bereavement service provided by a hospice, therefore their views related to experiences of expected death and longer-term support. It is not clear from this study which, if any, of these outcomes might be applicable to those experiencing sudden loss.

Measurement of outcomes is challenging in this area of practice, and it is necessary to develop new ways to conceptualise efficacy and effectiveness. One important means of doing this may be through insight into the kinds of processes that lead to the outcomes observed. Without evaluation, we cannot know whether interventions are effective, and whether they represent a good use of resources in an increasingly competitive healthcare environment. Schut and Stroebe⁶⁴ propose that instead of seeking to establish empirical criteria for success in such services, stakeholders should instead consider efficacy as the extent to which a service was able to protect the bereaved from the 'unnecessary consequences of the loss'. This is to say that bereavement is distressing in all cases, for all involved, but that there is potential for services

Table 2 Summary of key themes and findings

Person-centred and family-centred care	'Whole person' concerns
	Acts of remembrance and memorialisation
	Maintaining dignity
	The 'little things'
	Preparation
Institutional approaches	Flexibility
	Culture of care
	Leadership
	Adoption across institutions
	Symbolic; visibility of death; conversations
	Continuity—end of life through to mortuary care
Infrastructure	Education and staff support; community of practice
	Professional roles and boundaries
	Interdisciplinary and transdisciplinary working

or individuals to inadvertently add to the suffering of the bereaved if care is not delivered in an appropriate, compassionate and family-centred way. Adopting this perspective means that the success of a service relates to the extent to which it can help to mitigate against these unintended additional stressors for the bereaved, and for those who work with them.

This review has highlighted limitations in the quality and quantity of research available in relation to evaluating services and interventions at the end of life. However, from the literature identified, there are key mechanisms that appear to be of value in the implementation success of interventions at the end of life, at the time of death and during the immediate bereavement period (see [table 2](#)).

Limitations

As a scoping review we were concerned with seeking out published studies and reports but have not excluded the literature because of quality concerns as we were keen to include a broad range of literature covering a variety of aspects of practice.

CONCLUSION

Dying and grief are profoundly individual experiences. Currently, there are few comprehensive tools for evaluating complex service interventions in a way that answers the question of what works, and for whom, and in what circumstances. Qualitative research in this area is therefore an important part of understanding the impact of services and interventions. This review has provided an overview of the current state of research relating to interventions at the end of life and around and after the time of death in acute hospitals. The interventions related to person-centred and family-centred care, institutional approaches and the necessary infrastructure. A variety of approaches to evaluation have been described and appraised, highlighting limitations in the quality and quantity of research available in relation to evaluating services and interventions at the end of life.

Evaluating such interventions requires approaches that can accommodate the need for transparency and reliability and yet provide nuanced data describing what works to support people through dying and early grief. Evaluating the effectiveness of bereavement interventions presents major theoretical, ethical and practical challenges. Findings from this review highlights some of the key considerations that must be addressed when evaluating end-of-life care. These include what methods to use, the recruitment of participants, what to measure to demonstrate effectiveness, adapting measures to reflect cultural and other diversities, and how to deal with variables likely to influence the delivery and outcomes of the intervention.

Twitter Laura Green @heblau

Contributors All authors contributed to the planning of this review. LG: prepared manuscript, undertook review and led writing. LB: provided detailed feedback on study selection and structure, manuscript review and editing, wrote abstract. AS-L: reviewed and provided detailed comments and edited all versions of manuscript.

Funding Study funded by the Burdett Trust for Nursing.

Competing interests None declared.

Patient consent for publication Not applicable.

Ethics approval Not applicable.

Provenance and peer review Not commissioned; externally peer reviewed.

Supplemental material This content has been supplied by the author(s). It has not been vetted by BMJ Publishing Group Limited (BMJ) and may not have been peer-reviewed. Any opinions or recommendations discussed are solely those of the author(s) and are not endorsed by BMJ. BMJ disclaims all liability and responsibility arising from any reliance placed on the content. Where the content includes any translated material, BMJ does not warrant the accuracy and reliability of the translations (including but not limited to local regulations, clinical guidelines, terminology, drug names and drug dosages), and is not responsible for any error and/or omissions arising from translation and adaptation or otherwise.

Open access This is an open access article distributed in accordance with the Creative Commons Attribution Non Commercial (CC BY-NC 4.0) license, which permits others to distribute, remix, adapt, build upon this work non-commercially, and license their derivative works on different terms, provided the original work is properly cited, appropriate credit is given, any changes made indicated, and the use is non-commercial. See: <http://creativecommons.org/licenses/by-nc/4.0/>.

ORCID iD

Laura Green <http://orcid.org/0000-0002-2094-6341>

REFERENCES

- Shah SM, Carey IM, Harris T, *et al.* The effect of unexpected bereavement on mortality in older couples. *Am J Public Health* 2013;103:1140–5.
- NEoLcIN. *Local preferences and place of death in regions within England 2010*. National End of Life Care Intelligence Network, 2011.
- Bone AE, Gomes B, Etkind SN, *et al.* What is the impact of population ageing on the future provision of end-of-life care? population-based projections of place of death. *Palliat Med* 2018;32:329–36.
- Clark D, Armstrong M, Allan A, *et al.* Imminence of death among hospital inpatients: prevalent cohort study. *Palliat Med* 2014;28:474–9.
- Bloomer M. Palliative care provision in acute and critical care settings: what are the challenges? *Palliat Med* 2019;33:1239–40.
- Bloomer MJ, Moss C, Cross WM. End-Of-Life care in acute hospitals: an integrative literature review. *J Nurs Healthc Chronic Illn* 2011;3:165–73.
- Waller A, Dodd N, Tattersall MHN, *et al.* Improving hospital-based end of life care processes and outcomes: a systematic review of research output, quality and effectiveness. *BMC Palliat Care* 2017;16:1–13.
- Dias N, Hendricks-Ferguson VL, Wei H, *et al.* A systematic literature review of the current state of knowledge related to interventions for bereaved parents. *Am J Hosp Palliat Care* 2019;36:1124–33.
- Mayland CR, Mulholland H, Gambles M, *et al.* How well do we currently care for our dying patients in acute hospitals: the views of the bereaved relatives? *BMJ Support Palliat Care* 2017;7:bmjspcare-2014-000810:316–25.
- Caswell G, Pollock K, Harwood R, *et al.* Communication between family carers and health professionals about end-of-life care for older people in the acute hospital setting: a qualitative study. *BMC Palliat Care* 2015;14:35.
- Clark K, Cain J, Campbell L, *et al.* Caring for people dying in acute hospitals: a mixed-methods study to examine relative's perceptions of care. *Palliat Support Care* 2015;13:335–43.
- Gardiner C, Gott M, Ingleton C, *et al.* Extent of palliative care need in the acute hospital setting: a survey of two acute hospitals in the UK. *Palliat Med* 2013;27:76–83.
- Rolls L. Challenges in evaluating childhood bereavement services. *Bereavement Care* 2011;30:10–15.
- Beardsley C. 'In need of further tuning': using a US patient satisfaction with chaplaincy instrument in a UK multi-faith setting, including the bereaved. *Clin Med* 2009;9:53–8.
- Chapple A, Ziebland S. Viewing the body after bereavement due to a traumatic death: qualitative study in the UK. *BMJ* 2010;340:c2032.
- Grant MJ, Booth A. A typology of reviews: an analysis of 14 review types and associated methodologies. *Health Info Libr J* 2009;26:91–108.
- Arksey H, O'Malley L. Scoping studies: towards a methodological framework. *Int J Soc Res Methodol* 2005;8:19–32.
- DoH. *End of life care strategy: promoting high quality care for adults at the end of their life*. London, 2008.
- Wilson DM, Errasti-Ibarrondo B, Rodríguez-Prat A. A research literature review to determine how bereavement programs are evaluated. *Omega* 2021;83:831–58.
- Donnelly S, Prizeman G, Coimín Diarmuid Ó, *et al.* Voices that matter: end-of-life care in two acute hospitals from the perspective of bereaved relatives. *BMC Palliat Care* 2018;17:117.
- Ó Coimín D, Prizeman G, Korn B, *et al.* Dying in acute hospitals: voices of bereaved relatives. *BMC Palliat Care* 2019;18:91.
- Robinson J, Pilbeam C, Goodwin H, *et al.* The impact of uncertainty on bereaved family's experiences of care at the end of life: a thematic analysis of free text survey data. *BMC Palliat Care* 2021;20:1–10.
- NHS England. *Transforming end of life care in acute Hospitals: the route to success*. Leeds, 2015.
- Efstathiou N, Walker W, Metcalfe A, *et al.* The state of bereavement support in adult intensive care: a systematic review and narrative synthesis. *J Crit Care* 2019;50:177–87.
- Kentish-Barnes N, Chevret S, Azoulay E. Impact of the condolence letter on the experience of bereaved families after

- a death in intensive care: study protocol for a randomized controlled trial. *Trials* 2016;17:1–6.
- 26 Kentish-Barnes N, Cohen-Solal Z, Soupart V, *et al.* "It Was the Only Thing I Could Hold Onto, But...". *Crit Care Med* 2017;45:1965–71.
 - 27 Kentish-Barnes N, Siminoff LA, Walker W, *et al.* A narrative review of family members' experience of organ donation Request after brain death in the critical care setting. *Intensive Care Med* 2019;45:331–42.
 - 28 Neville TH, Clarke F, Takaoka A, *et al.* Keepsakes at the end of life. *J Pain Symptom Manage* 2020;60:941–7.
 - 29 Thornton R, Nicholson P, Harms L. Creating evidence: findings from a Grounded theory of Memory-Making in neonatal bereavement care in Australia. *J Pediatr Nurs* 2020;53:29–35.
 - 30 Donovan LA, Wakefield CE, Russell V, *et al.* Hospital-Based bereavement services following the death of a child: a mixed study review. *Palliat Med* 2015;29:193–210.
 - 31 Riegel M, Randall S, Buckley T. Memory making in end-of-life care in the adult intensive care unit: a scoping review of the research literature. *Aust Crit Care* 2019;32:442–7.
 - 32 Aiyelaagbe E, Scott RE, Holmes V, *et al.* Assessing the quality of bereavement care after perinatal death: development and piloting of a questionnaire to assess parents' experiences. *J Obstet Gynaecol* 2017;37:931–6.
 - 33 Goebel S, Mai SS, Gerlach C, *et al.* Family members of deceased palliative care patients receiving bereavement anniversary cards: a survey on the recipient's reactions and opinions. *BMC Palliat Care* 2017;16:1–4.
 - 34 Schaefer MR, Wagoner ST, Young ME, *et al.* Healing the hearts of bereaved parents: impact of legacy Artwork on grief in pediatric oncology. *J Pain Symptom Manage* 2020;60:790–800.
 - 35 Beiermann M, Kalowes P, Dyo M, *et al.* Family members' and intensive care unit nurses' response to the ECG Memento© during the bereavement period. *Dimens Crit Care Nurs* 2017;36:317–26.
 - 36 Garstang J, Griffiths F, Sidebotham P. What do bereaved parents want from professionals after the sudden death of their child: a systematic review of the literature. *BMC Pediatr* 2014;14:269.
 - 37 Bloomer MJ, Endacott R, Copnell B, *et al.* 'Something normal in a very, very abnormal environment'—Nursing work to honour the life of dying infants and children in neonatal and paediatric intensive care in Australia. *Intensive Crit Care Nurs* 2016;33:5–11.
 - 38 Bloomer MJ, Endacott R, O'Connor M, *et al.* The 'dis-ease' of dying: challenges in nursing care of the dying in the acute hospital setting. A qualitative observational study. *Palliat Med* 2013;27:757–64.
 - 39 Bloomer MJ, Morphet J, O'Connor M, *et al.* Nursing care of the family before and after a death in the ICU—an exploratory pilot study. *Aust Crit Care* 2013;26:23–8.
 - 40 Raymond A, Lee SF, Bloomer MJ. Understanding the bereavement care roles of nurses within acute care: a systematic review. *J Clin Nurs* 2017;26:1787–800.
 - 41 Naef R, Peng-Keller S, Rettke H, *et al.* Hospital-Based bereavement care provision: a cross-sectional survey with health professionals. *Palliat Med* 2020;34:547–52.
 - 42 Bloomer MJ, Walshe C. It's not what they were expecting': a systematic review and narrative synthesis of the role and experience of the hospital palliative care volunteer. *Palliat Med* 2020;34:589–604.
 - 43 Kochen EM, Jenken F, Boelen PA, *et al.* When a child dies: a systematic review of well-defined parent-focused bereavement interventions and their alignment with grief- and loss theories. *BMC Palliat Care* 2020;19:1–22.
 - 44 Coombs M. A scoping review of family experience and need during end of life care in intensive care. *Nurs Open* 2015;2:24–35.
 - 45 Butler AE, Copnell B, Hall H. When a child dies in the PICU: practice recommendations from a qualitative study of bereaved parents. *Pediatr Crit Care Med* 2019;20:e447–51.
 - 46 Moss SJ, Wollny K, Poulin TG, *et al.* Bereavement interventions to support informal caregivers in the intensive care unit: a systematic review. *BMC Palliat Care* 2021;20:1–10.
 - 47 Walker W, Deacon K. Nurses' experiences of caring for the suddenly bereaved in adult acute and critical care settings, and the provision of person-centred care: a qualitative study. *Intensive Crit Care Nurs* 2016;33:39–47.
 - 48 Bristowe K, Carey I, Hopper A, *et al.* Patient and carer experiences of clinical uncertainty and deterioration, in the face of limited reversibility: a comparative observational study of the amber care bundle. *Palliat Med* 2015;29:797–807.
 - 49 Harrop E, Mann M, Semedo L, *et al.* What elements of a systems' approach to bereavement are most effective in times of mass bereavement? A narrative systematic review with lessons for COVID-19. *Palliat Med* 2020;34:1165–81.
 - 50 Bristowe K, Carey I, Hopper A, *et al.* Seeing is believing - healthcare professionals' perceptions of a complex intervention to improve care towards the end of life: A qualitative interview study. *Palliat Med* 2018;32:525–32.
 - 51 Walsh T, Breslin G, Curry P, *et al.* A whole-hospital approach? some staff views of a hospital bereavement care service. *Death Stud* 2013;37:552–68.
 - 52 Della Penna R, Martel H, Neuwirth EB, *et al.* Rapid spread of complex change: a case study in inpatient palliative care. *BMC Health Serv Res* 2009;9:245.
 - 53 McCourt R, Power JJ, Glackin M. General nurses' experiences of end-of-life care in the acute hospital setting: a literature review. *Int J Palliat Nurs* 2013;19:510–6.
 - 54 Williams R, Harris S, Randall L, *et al.* A bereavement after-care service for intensive care relatives and staff: the story so far. *Nurs Crit Care* 2003;8:109–15.
 - 55 Shariff A, Olson J, Salas AS, *et al.* Nurses' experiences of providing care to bereaved families who experience unexpected death in intensive care units: a narrative overview. *Can J Crit Care Nurs* 2017;28:21–9.
 - 56 Walker W, Efstathiou N. Support after patient death in the intensive care unit: Why 'I' is an important letter in grief. *Nurs Crit Care* 2020;25:266–8.
 - 57 Kapoor S, Morgan CK, Siddique MA, *et al.* "Sacred Pause" in the ICU: Evaluation of a Ritual and Intervention to Lower Distress and Burnout. *Am J Hosp Palliat Care* 2018;35:1337–41.
 - 58 Roberts D, Green L. *Collaborative practice in palliative care*. Routledge, 2021.
 - 59 Efstathiou N, Lock A, Ahmed S. A realist evaluation of a "single point of contact" end-of-life care service. *J Health Organ Manag* 2020;377. doi:10.1108/JHOM-07-2019-0218. [Epub ahead of print: 25 May 2020].
 - 60 Woodthorpe K, Komaromy C. A missing link? the role of mortuary staff in hospital-based bereavement care services. *Bereavement Care* 2013;32:124–30.
 - 61 Luta X, Ottino B, Hall P, *et al.* Evidence on the economic value of end-of-life and palliative care interventions: a narrative review of reviews. *BMC Palliat Care* 2021;20:1–21.
 - 62 Aoun SM, Ewing G, Grande G, *et al.* The impact of supporting family caregivers before bereavement on outcomes after bereavement: adequacy of end-of-life support and achievement of preferred place of death. *J Pain Symptom Manage* 2018;55:368–78.
 - 63 Higginson IJ, Evans CJ, Grande G, *et al.* Evaluating complex interventions in end of life care: the MORECare statement on good practice generated by a synthesis of transparent expert consultations and systematic reviews. *BMC Med* 2013;11:111.
 - 64 Schut H, Stroebe M. Challenges in evaluating adult bereavement services. *Bereavement Care* 2011;30:5–9.