



# Community access to palliative care medicines—patient and professional experience: systematic review and narrative synthesis

Mizue Ogi,<sup>1</sup> Natasha Campling,<sup>1</sup> Jakki Birtwistle,<sup>2</sup> Alison Richardson,<sup>1,3</sup> Michael I Bennett,<sup>4</sup> Miriam Santer,<sup>5</sup> Susan Latter <sup>1</sup>

► Additional material is published online only. To view, please visit the journal online (<http://dx.doi.org/10.1136/bmjspcare-2020-002761>).

<sup>1</sup>School of Health Sciences, University of Southampton, Southampton, UK

<sup>2</sup>Leeds Institute of Health Sciences, University of Leeds, Leeds, UK

<sup>3</sup>University Hospital Southampton NHS Foundation Trust, Southampton, UK

<sup>4</sup>Leeds Institute of Health Sciences, University of Leeds, Leeds, UK

<sup>5</sup>School of Primary Care, Population Sciences and Medical Education, University of Southampton, Southampton, UK

## Correspondence to

Professor Susan Latter, School of Health Sciences, University of Southampton, Southampton SO17 1BJ, Hampshire, UK; [sml@soton.ac.uk](mailto:sml@soton.ac.uk)

Received 27 October 2020

Revised 11 January 2021

Accepted 15 February 2021



© Author(s) (or their employer(s)) 2022. Re-use permitted under CC BY. Published by BMJ.

**To cite:** Ogi M, Campling N, Birtwistle J, et al. *BMJ Supportive & Palliative Care* Epub ahead of print: [please include Day Month Year]. doi:10.1136/bmjspcare-2020-002761

## ABSTRACT

**Background** Providing palliative care patients living at home with timely access to medicines is critical to enable effective symptom management, minimise burden and reduce unplanned use of healthcare services. Little is known about how diverse community-based palliative care models influence medicine access.

**Objective** To produce a critical overview of research on experiences and outcomes of medicine access in community-based palliative care models of service delivery through a systematic review and narrative synthesis.

**Methods** MEDLINE, CINAHL, EMBASE, PsycINFO, Cochrane Library databases and grey literature were systematically searched for all types of studies. Study quality was assessed using the Mixed Methods Appraisal Tool; a narrative synthesis was used to integrate and summarise findings.

**Results** 3331 articles were screened; 10 studies were included in the final sample. Studies included a focus on community pharmacy (n=4), hospice emergency medication kits (HEMKs) in the home (n=3), specialist community nurse prescribers (n=1), general practice (n=1) and one study included multiple service delivery components. Community pharmacy was characterised by access delays due to lack of availability of medicine stock and communication difficulties between the pharmacy and other healthcare professionals. HEMKs were perceived to reduce medicine access time out of hours and speed symptom control. However, the majority of studies comprised small, local samples, largely limited to self-reports of health professionals. There was a lack of data on outcomes, and no comparisons between service delivery models.

**Conclusions** Further research is required to understand which models facilitate rapid and efficient access to medicines for community-based palliative care patients.

## Key messages

### What was already known?

- ⇒ Access to medicines in the home in the last year of life is critical for symptom control and reducing distress.
- ⇒ Patients and carers may experience problems in access, and processes can be lengthy and burdensome.
- ⇒ A number of different models of end-of-life service delivery are in operation, including recent innovations.
- ⇒ Little is known about how accessing medicines is experienced within service delivery models.

### What are the new findings?

- ⇒ Community pharmacy was characterised by delays in accessing medicines.
- ⇒ Hospice-provided medication kits stored at home were perceived to reduce medicines' access time out-of-hours, and speed symptom control.
- ⇒ Few large scale, rigorous studies exist to allow conclusions about access experiences to be drawn.

### What is their significance?

- ⇒ Further research into experiences and outcomes of medicines access at end-of-life in the community is required

## INTRODUCTION

Population ageing, together with the home being many people's preferred place of death,<sup>1</sup> has increased the need for community-based palliative care, including access to medicines. Timely patient access to medicines in the last year of life (end of life (EoL)) is critical for control of symptoms managed at home.<sup>2</sup> Patients may have a complex range of clinical issues related to their condition, and fluctuating symptoms, including severe pain, can be difficult to control,

requiring frequent readjustment of medication.<sup>3</sup> The process of medicine access for symptom control can be a lengthy one, including obtaining a prescription for a medicine, ensuring it is dispensed correctly and supplied, together with information that enables patients and carers to manage medicines effectively in the home. Evidence from our previous studies suggests that for patients and carers receiving community-based palliative care, the experience of accessing medicines is often a considerable burden, involving multiple professionals and including a complex process of attaining and managing controlled drugs, such as opioids.<sup>4</sup>

In the UK, the provision of community palliative care is characterised by heterogeneous models of service delivery.<sup>5</sup> Care can be delivered by generalist or specialist health professionals, or a mix of both; patients may or may not receive care from specialist palliative care nurses, and these or other generalist nurses may or may not be trained to independently prescribe medicines directly to patients. Nurses and pharmacists in the UK have among the most extensive prescribing rights in the world, including the prescription of controlled drugs. The introduction of these prescribing rights was driven by the need to increase speed of access to medicines for patients and make best use of health professionals' skills.<sup>6</sup> Additionally, in some areas, community pharmacies may hold enhanced stocks of palliative care medicines and extended opening hours as part of specially commissioned services. Other more recent initiatives in service delivery may also impact the experience of medicine access: a policy drive to increase the availability of out-of-hours telephone advice for palliative care patients; and pharmacists with a prescribing qualification are increasingly employed in general practices in England in a move to diversify primary care workforce skill mix.<sup>7</sup> Paramedics were also granted prescribing authority in the UK in 2019, who may be a first point of call for patients in an emergency.

However, little is known about the impact of these models of service delivery on patients' experience of accessing EoL medicines in the community or the relative merits of each approach. Questions such as which models work best, do recent initiatives improve speed and lessen the burden on patients working to access medicines and what factors support or challenge access experiences remain unanswered.

The aim of the systematic review reported here was to produce a critical overview of existing research on experiences and outcomes of medicine access associated with models of service delivery of community-based EoL care. Our aim was to systematically search for and review international research studies for evidence of: (A) patient, carer and health professional experience of medicine access within the context of different models of service delivery, and (B) patient and carer outcomes associated with medicine access experiences. In this review, medicine access was defined

as prescribing, dispensing, supplying and associated information provision about medicines.

This systematic review formed part of a larger study entitled 'Accessing medicines at end-of-life: a multi-stakeholder, mixed-method evaluation of service provision' (ACcess To MEDicines (ActMed) study; National Institute for Health Research-funded project (HS & DR 16/52/23)) (<https://www.journalslibrary.nihr.ac.uk/programmes/hsdr/165223/#/>).

## METHODS

The systematic review followed the Preferred Reporting Items for Systematic Reviews and Meta-Analyses (PRISMA) reporting guidelines.<sup>8</sup> The review is registered on the International Prospective Register of Systematic Reviews (PROSPERO) database (Ref No CRD42017083563) ([http://www.crd.york.ac.uk/PROSPERO/display\\_record.php?ID=CRD42017083563](http://www.crd.york.ac.uk/PROSPERO/display_record.php?ID=CRD42017083563)).

## Search strategy

A search strategy was developed based on the research question, 'What are the experiences and outcomes of medicine access for patients and carers receiving community-based models of palliative care, during the last year of life?' The search was conducted as described below to include any studies related to this focus.

## Information sources

1. Database search: Four electronic databases (MEDLINE, PsycINFO, CINAHL and EMBASE) were searched for published literature from January 2006 to March 2019 using keywords, synonyms and Boolean operators. An example of the search strategy is shown in online supplemental table 1.
2. Citation search: A citation search was conducted on the included articles for further relevant material.
3. Databases of systematic reviews: The Cochrane Library database was searched in order to acquire relevant systematic reviews published between January 2006 and June 2019.
4. Ongoing systematic reviews: To obtain information on relevant ongoing systematic reviews, PROSPERO was searched for reviews registered between January 2006 and June 2019.
5. Relevant research in progress: To gain information regarding relevant ongoing trials, ISRCTN and ClinicalTrials.gov were searched for trials registered between January 2006 and June 2019.
6. Experts' lists: To obtain further relevant published or grey literature, members of the Scientific Steering Committee of the ActMed study were asked for their top five references on this issue.
7. Grey literature: To minimise the impact of publication bias, grey literature sources (British Library, King's Fund, Networked Digital Library of Theses and Dissertation (NDLTD), National Institute for Health and Care Excellence Evidence Search, Nuffield Trust, OpenGrey and Google) were searched for unpublished materials between January 2006 and June 2019.

Inclusion criteria:	
▪	Studies evaluating patients', carers', and health professionals' experiences and outcomes of medicine access processes specific to or inclusive of palliative and EoL care being provided to adult patients living in their own homes
▪	EoL: the last year of life
▪	Medicine access: prescribing, dispensing, supplying and providing associated information about medicines
▪	Prescribed medicines (excluding diagnostic tests, medical devices and medical materials)
▪	Published in English language
▪	Published between January 2006 - March 2019 (June 2019 for Cochrane Database of Reviews and Grey Literature sources)
Exclusion criteria:	
▪	Services for or related to children
▪	Services for in-patients or not-at-home care (e.g. nursing home, hospital wards)
▪	Services or support for medicines management within the home
▪	Research related to anticipatory, or 'just-in-case', medicines to control symptoms in the last days of life exclusively*
▪	Geographical medicine access in low economic countries not transferable to the UK **
▪	Evaluation of professional capacities for supporting medicines access processes
*In the United Kingdom, and internationally, 'just-in-case' medicines refer to a well-established practice of a few core medicines for mostly sub-cutaneous administration being placed in the home in case these are needed for symptom management in the last few days of life. As just-in-case medicines pertain only to this limited time frame and do not involve access processes as defined here, these were excluded from the review.	
** Exclusion was based on a study focus on geographical access to medicines, which we considered materially different than the focus of our review. Whilst issues of geographical access were often associated with low economic countries, we did exclude any study on the basis of the country in which it was conducted.	

**Figure 1** Phase 1 study inclusion and exclusion criteria. EoL, end of life.

## Study selection

### Eligibility

Inclusion and exclusion criteria are summarised in [figure 1](#). As described above, medicine access was defined as prescribing, dispensing, supplying and providing associated information about medicines; EoL was defined as the last year of life. The search period start date was 2006 because this was the point at which nurses and pharmacists in the UK gained the legal ability to independently prescribe any medicine from the British National Formulary.<sup>9</sup> Children and young people under 18 years of age were excluded as our focus was on access to medicines for adults living at home.

### Selection process

Studies were selected for inclusion using a two-step process: one researcher (MO) screened titles (and abstracts when necessary) to remove duplicates using data management software (EndNote V.X8.2, Clarivate Analytics). Following deduplication, titles and abstracts were screened to determine study eligibility. To ensure the validity of the process, one reviewer (MO) and a second reviewer (NC) each independently screened a random sample of 10% of abstracts; screening results were double-checked by a third reviewer (SL). After resolving disagreements and achieving consensus, the remainder of the screening was undertaken by a single author (MO). Following initial decisions on papers for inclusion, two review authors (MO and SL) each independently reviewed

full-text articles against all inclusion and exclusion criteria and resolved disagreements through discussion in order to achieve consensus.

## Data extraction and quality appraisal

Data extraction was conducted for each eligible study by a single reviewer (MO) and checked against the manuscript by another reviewer (SL). Quality appraisal was undertaken using the Mixed Methods Appraisal Tool, which includes tools for different study designs and is therefore appropriate for systematic reviews that include qualitative, quantitative and mixed methods research studies.<sup>10</sup> Appraisal was undertaken by a single reviewer (MO), recorded on a data extraction sheet and checked by another reviewer (SL). Data management software (EndNote) was used to organise the search results and references.

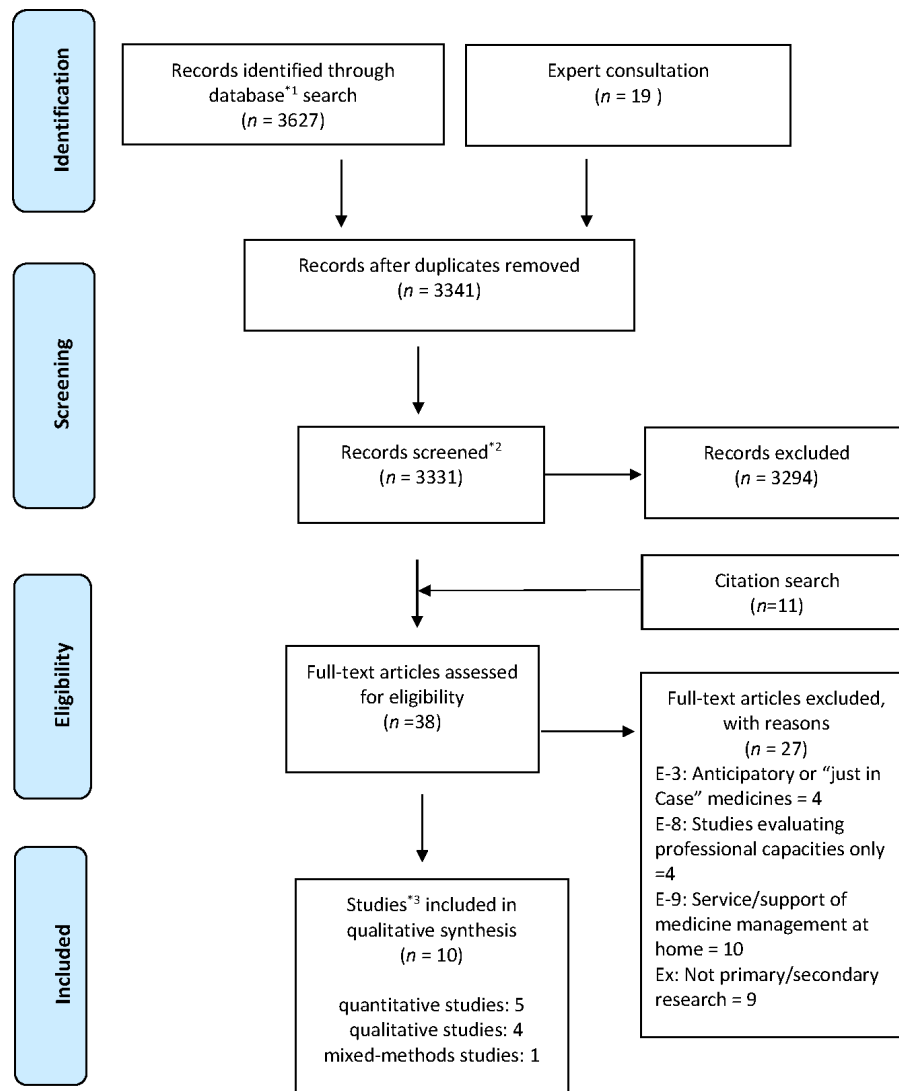
## Synthesising and interpreting results

The search identified that studies included qualitative, quantitative and mixed methods research. Thus, a framework for a mixed studies review was used, with thematic analysis of qualitative data within a data-based convergent synthesis design.<sup>11</sup> In this design, qualitative and quantitative data can be analysed and synthesised together. Overlaying this, however, and in keeping with the study focus, we structured the review according to models of service delivery that we found in the literature reviewed: community pharmacy services; general practitioners (GP; family doctors); community specialist nurse independent prescribers; and hospice emergency medication kits (HEMK).

## RESULTS

The electronic database search produced 3627 records and 19 records were identified by expert consultation, as shown in the PRISMA flow diagram in [figure 2](#). Ten studies were included in the review: five quantitative studies, four qualitative studies and one mixed methods study (online supplemental table 2). One study was reported as a short series over two editions of a journal<sup>12 13</sup>; these were linked together for the purposes of the current review.

All studies were from economically developed countries: the UK, Ireland, the USA, Australia and Japan. The majority of the included studies used small sample sizes and were locality-based studies limited to a few districts or institutions, with the exception of one nationwide study in Japan. In general, the quality of each study was variable in terms of methodological rigour; limitations were that samples were often insufficiently described, making conclusions about generalisability or transferability difficult, the development of data collection tools often lacked detail and surveys had low response rates, making response bias difficult to rule out. There were no randomised controlled trials or large-scale studies (details of quality assessments are shown in online supplemental table 3).



**Figure 2** Preferred Reporting Items for Systematic Reviews and Meta-Analyses (PRISMA) 2009 flow diagram. \*1Database; MEDLINE: 1306+CINAHL: 167+PsycINFO: 968+EMBASE: 1186. \*2The reason for reduction; sources were not accessible: 10. \*3Two papers reporting the same study were counted as one study.

### Medicine access and community pharmacy services

Four studies focused exclusively on investigating medicine access experiences related to community pharmacy,<sup>14–17</sup> of which two studies<sup>15 17</sup> included pharmacies providing enhanced or commissioned palliative medicine services (in the UK, this typically involves keeping a core stock of palliative medicines and extended opening hours for access). Two further studies included evaluation of community pharmacy medicine access as part of investigating the broader model of community service provision for patients receiving home-based specialist palliative care.<sup>18 19</sup> Two studies focused exclusively on the perspectives of community pharmacists in providing access<sup>14 15</sup> while three studies also included patients and other health professionals,<sup>17–19</sup> and Bennie *et al* focused solely on patients' views of community pharmacy access.<sup>16</sup>

### The access experience

Overall, findings from all six studies revealed a picture of delays and problems with accessing medicines from community pharmacies; these were focused on pharmacy stock of medicines and on information provision.

### Pharmacy stock of palliative care medicines

Ise *et al* provide some quantitative data on access, indicating less than comprehensive provision, with 77% of the 1036 community pharmacies in their nationwide survey in Japan holding a 'narcotics' (opioid) licence and only 50% reporting involvement in monthly provision of opioids.<sup>14</sup> It is unclear why the other 23% of pharmacies did not hold a licence or how this affected the patient experience of accessing opioids, but Ise *et al* comment that a system whereby all community pharmacies can supply opioids to all patients who need them has clearly not been established. Certainly, lack



of community pharmacy stock of palliative care medicines generally is also reported as problematic in other studies.<sup>15 17 18</sup> Miller found that although 44/55 (80%) of the patients/carers surveyed reported receiving palliative medicines on their first visit, 10/54 (1 missing data, 19%) had to travel to more than one pharmacy before accessing the medicines and 40/55 (73%) reported that the medicines were 'needed urgently'.<sup>17</sup> Although not measured quantitatively, community pharmacists in Akram *et al*'s study of four localities in Scotland also reported delays in being able to provide palliative care medicines, and these pharmacies were part of an enhanced commissioned service and specialist network to provide these medicines to patients in the community.<sup>15</sup> On the other hand, Lucey *et al*'s study, a systems analysis of obtaining medications for patients under the care of a specialist palliative home care provider, reported that in 54% of 22 patient-reported medicine changes during the study period, medication was received without delay. However, the numbers of patients were small (n=12).<sup>18</sup> Nurses' reports in this study also showed only 12 instances of delays across 57 patients over a 12-week period—the majority of these being over 48 hours' wait.<sup>18</sup> The main reason for delays was due to no stock in the community pharmacy.<sup>18</sup> The overall number of medicine access episodes that nurses reported on is not clear, but 12 delays over 12 weeks for 57 patients seem a relatively small number of delays.<sup>18</sup>

#### Information provision

Data on community pharmacy information provision for patients are available in three studies,<sup>14 16 19</sup> and again show there is scope for improvement. Patients and carers in Bennie *et al*'s focus groups saw the pharmacist as a source of medicine information (as well as GPs) if they had a relationship with them. However, some reported little contact with a community pharmacist and overall knowledge of services offered was poor, with patients often acquiring knowledge in an unplanned way through family/friends or when in a crisis situation.<sup>16</sup> Patients and carers wanted a more proactive role from pharmacists, in particular regarding prescription and supply processes of controlled drugs or when a new medicine was prescribed.<sup>16</sup> The sample in this study was small: 14 patients and 13 carers from one city in Scotland.<sup>16</sup> Nevertheless, findings from Ise *et al*'s national survey also highlight gaps in information provision: 50% of the 1036 pharmacists in their study reported that they did not counsel patients about their palliative care medicines, primarily because they lacked information about the patient (eg, disease status and awareness of illness and opioids), and less than 5% had a room to counsel the patient privately.<sup>14</sup> In Australia, carers and patients felt that sometimes the information provided was inadequate for them to manage their medications at home appropriately.<sup>19</sup>

#### Influences on accessing medicines from community pharmacies Communication, collaboration and education

Four studies report on influences that challenge or support the access process.<sup>14 15 17 18</sup> Many of these are concerned with communication between the pharmacist and other members of the healthcare team. Communication with the pharmacy was reported as problematic, causing delays in supplying medicines, through a mismatch between prescriptions received and stocks held<sup>15</sup> and/or a lack of information on the palliative care status of the patient.<sup>14 15 17</sup> The latter was either due to the pharmacist seeing unfamiliar patients who had been referred by another network pharmacist<sup>15</sup> or health professionals' reluctance to share information.<sup>17</sup> A finding reported by both studies that included enhanced or commissioned services also related to communication<sup>15 17</sup>: medicine access was adversely affected by health professionals' lack of knowledge about these services. Miller concludes that '*poor healthcare professional (HCP) knowledge of which pharmacies stock palliative medicines meant patients and their families were not always able to access medicines promptly*' and that HCPs need to routinely be made aware of such services and their locations.<sup>17</sup> Similarly, patients and carers in Bennie *et al*'s study also reported a lack of awareness of more general pharmacy services. Pharmacists in Akram *et al*'s study also reported that communication was disrupted when patients transferred between secondary and primary care settings, affecting prescriptions and the ability to swiftly supply medicines needed.<sup>15</sup>

Little data were available on factors supporting good access, related to the fact that studies highlighted poor access experiences. However, pharmacists in one study stated that pre-emptive communication from community nurses about medicines likely to be required by patients was helpful, as well as being part of a network of pharmacists, where medicines and advice could be accessed.<sup>15</sup>

Akram *et al* also found community pharmacists perceive better training of counter staff and of locum pharmacists is needed, as well as resources for pharmacists to support clinical practice.<sup>15</sup> Additionally, Miller's focus group interview highlighted that community pharmacists often have limited experience and knowledge about palliative care medicines.<sup>17</sup> Furthermore, Kuruvilla *et al*'s findings indicated GPs unfamiliar with palliative care medicine needed support, and a palliative care specialist pharmacist could be valuable for such GPs and be an integral role for a community palliative care service.<sup>19</sup>

#### Practical problems with palliative medicine stock and couriering medicines

Miller found pharmacists reported practical difficulties keeping palliative medicines in stock—for example, secure storage space and the wide range of opioid dosage requirements for individual patients.<sup>17</sup> Seventy per cent of pharmacists in Ise *et al*'s survey also said that being able to have a swift supply from, and ability

to return opioids to, wholesalers would be useful, as well as being able to get stock from other local pharmacies.<sup>14</sup> Further obstacles were also identified: 33% (19) of pharmacists completing questionnaires in Lucey *et al*'s study reported difficulties in accessing stock and 49% that medicines not being on state reimbursement schemes caused delays.<sup>18</sup>

In addition, the authors report the other main factor causing delays was no one to courier prescriptions/medication to and from GP, pharmacy and patient. The difficulty of picking up medications from community pharmacy by patients or carers was also noted by Miller.<sup>17</sup>

In another study, families' involvement in collecting prescription or medicines and delivery services seemed to be helpful, though the latter was not always available and they were a financial burden for some patients when delivery was not free of charge.<sup>19</sup> Additionally, patients and families receiving medicines in this way seldom interacted directly with pharmacists.<sup>19</sup>

#### Outcomes of community pharmacy medicine access

There are little data on outcomes reported in the studies reviewed. One study reported that commissioned service pharmacies stocking an agreed list of palliative care medicines could shorten the time required to obtain urgently needed palliative medication compared with medication being provided by a non-commissioned service pharmacy.<sup>17</sup> The median time taken for accessing urgent palliative care medicines was significantly longer for non-commissioned service pharmacies (5 hours) compared with pharmacies commissioned to hold stock of palliative care medicines (10 min,  $p=0.002$ ).<sup>17</sup> Additionally, compiling tailored lists of palliative care medications through communication between pharmacies and GPs resulted in a similar time saving in commissioned pharmacies.<sup>17</sup> However, the impact of this on outcomes such as symptom control, patient and carer distress or use of emergency health services was not evaluated.

#### GPs (family doctors)

Only one study included data on GPs' experiences of providing medicine access, focusing on delays and the causes of these.<sup>18</sup> Questionnaires were sent to 268 GPs in one city, asking them to select the most common causes of delay from a prespecified list.<sup>18</sup> One hundred and eleven questionnaires were returned (41% response rate).<sup>18</sup> No delay was reported by 34% of GPs.<sup>18</sup> The most commonly cited factor causing delay was the need to clarify the advice given by the home care team (30.6%), followed by the inability of someone to collect the prescription (23.4%) and 18.9% of respondents reported the patient being unable to attend the surgery as a cause of delay.<sup>18</sup>

#### Community specialist nurse independent prescribers

One study conducted interviews with six independent nurse prescribers employed as community palliative care clinical nurse specialists in an interpretive phenomenological study.<sup>12,13</sup> The study was conducted in one region in England and aimed to understand the lived experience of these nurses prescribing for palliative care patients in the community.<sup>12</sup> They found the most significant perceived benefit of nurse prescribing, reported by all six nurses, was that it enabled patients to access medication quickly, particularly near the end of their life, leading to effective symptom management.<sup>13</sup> The majority of the nurses also considered that it was during out of hours that the ability to prescribe independently had the most impact, preventing delays by avoiding the need to call an out-of-hours doctor, which could reportedly take many hours.<sup>13</sup> The authors conclude: '*The ability of community palliative care clinical nurse specialists to prescribe can facilitate rapid access to medicines, particularly during out-of-hours periods*'<sup>13</sup> (p 133).

#### Hospice emergency medication kits

Three studies from the USA evaluated the outcome of HEMKs regarding use, impact and cost.<sup>20–22</sup> HEMKs are typically ordered by a physician on referral to home hospice service, and kept in the patient's home, to allow the patient access to small quantities of medication that can be administered immediately on nurse instruction.<sup>20–22</sup> Emergency medication kits contain sufficient medications for 12–72 hours, thus avoiding the immediate need for pharmacy and physician involvement after hours.<sup>21</sup> (HEMKs were intended for use in any emergency across an extended period at EoL and contained a wide range of medicines, including, for example, antibiotics. We therefore considered these studies met our inclusion criteria, and were not equivalent to 'just-in-case' boxes, which were excluded from the review.) All studies included an evaluation of the perceived impact of HEMKs, which shed light on their effect on access to medicines. In all studies, clinicians providing care were asked about HEMKs' impact on unplanned healthcare resource use; the majority considered that kits averted use of other services. For example, 93% of the 78 home hospice nurses completing a questionnaire survey in one study reported that an emergency department visit or hospitalisation was avoided by having a kit in the home, with 26.1% reporting this was 'often' and 40.6% 'very often'.<sup>22</sup> Clinician views on helpfulness and patient satisfaction were also positive across the two studies measuring this, with 59% of nurses considering HEMKs to be helpful 100% of the time<sup>22</sup>; and 100% ( $n=13$ ) of the hospices using HEMKs in the other study reporting it increased both patient and nurse satisfaction.<sup>21</sup> In a comparison between a hospice using HEMKs for some patients and one not using them at all, Walker and McPherson also report

the after-hours nurses perceived caller (patient/family) satisfaction was significantly higher in hospice patients with a kit compared with both the non-kit hospice patients and the HEMK hospice patients without a kit (95%, 75% and 82%, respectively;  $p < 0.001$ ).<sup>21</sup> One study also measured the impact of HEMKs on perceived symptom relief time.<sup>21</sup> Nurses in the hospice using HEMKs estimated 56% of after-hours callers received symptom relief within 30 min, whereas nurses reported none of their callers from the hospice without kits were treated satisfactorily in less than 30 min.<sup>21</sup>

Overall, while HEMKs were found to have a positive impact on a number of medicine access indicators in all three studies—including, perhaps, notably shorter time to symptom relief and reduced use of emergency services—all were small scale. Two studies were confined to a state-wide hospice survey,<sup>20 21</sup> and one focused on a sample from one medical centre only, resulting in overall small numbers of hospices, clinicians and patient records included.<sup>22</sup> In addition, the majority of the data from all studies were limited to clinicians' perceptions only, with limited objective data and no patient or carer experiences captured.

## DISCUSSION

This review found sparse research in this area: 9 of the 10 studies were small-scale or pilot studies and local samples. Although it is difficult to generalise the results, this review identified several problems with current models and also highlighted potential approaches to improving medicine access.

Overall findings suggest there are problems with accessing medicines via community pharmacies, and a number of issues delaying access have been identified, many of which focus on either pharmacy stock or communication between the pharmacy and health professionals, and with patients. However, with the exception of one study (Ise *et al*), sample sizes were small and pertain to only a few localities, and there is a lack of data on outcomes of access experiences.

Wider literature also reports deficiencies in community pharmacy stock of palliative medicines,<sup>23</sup> and in our review we found pharmacies commissioned to provide stocks of locally agreed palliative medication lists reduced delays in medicine access and tailored lists produced through communication between pharmacies and GPs worked similarly.<sup>17</sup> However, this study evaluated only one local service and city area; thus, evaluation of these services on a wider scale is warranted. Alternatively, improvements upstream in the supply chain to community pharmacies might also be effective in avoiding potential delays—further research into the effectiveness of the supply chain of palliative care medicines is also required. Studies also suggested a number of problematic issues were linked to communication between pharmacists and patients (patients' lack of awareness of services, and

of opportunity for information provision about medicines) and/or between pharmacists and other health professionals (pharmacists' lack of awareness of patients' palliative care status, health professionals' lack of awareness of commissioned or enhanced pharmacy services). Patients and carers' needs for information about medicines in this context have been repeatedly identified,<sup>24–26</sup> and the potential role of the pharmacist in fulfilling such needs also highlighted. For example, Latif *et al* recommend that pharmacists should elicit patient's level of understanding,<sup>27</sup> their concerns about medicines, and provide tailored information to ensure medicine optimisation. The review reported here suggests more proactive awareness raising of pharmacy services, and more pharmacist engagement in information giving continues to be required. To address the communication gap between community pharmacy and the wider healthcare team, greater integration of the pharmacist into the primary healthcare team would be advantageous. Calls for such actions for the pharmacy profession have been made in other contexts.<sup>28</sup> Our review also suggests there may be a case for improved training and education or support for community pharmacists and GPs as well as counter staff and locum pharmacists, a recommendation made elsewhere in relation to generalists and specialist palliative care medicines.<sup>29 30</sup> Further to the problems identified in this area in their 2012 study, Akram *et al* also reported a promising initiative of a specialist palliative care pharmacist who provided education for, and facilitated involvement of, community pharmacists in palliative care locally.<sup>31</sup> This kind of approach might assist collaboration among community HCPs and support better information provision; the model of a specialist palliative care community pharmacist has recently been recommended in national policy in this area.<sup>32</sup> Wider examination of this area is warranted.

Three studies in this review suggested that HEMKs—kits comprised a number of palliative care medicines stored in the patient's home that could be used in an emergency—can avert hospital admissions and emergency department visits and improve quality of care at home by providing timely access during out of hours. Accessing services and medicines out of hours is known to be particularly problematic and a focus for service delivery recommendations,<sup>33</sup> and so the use of such kits in the home offers a promising way to deal with this. A qualitative evaluation of HEMKs introduced in an Australian setting<sup>34</sup> adds to the positive data on this form of service delivery: caregivers 'overwhelmingly' (p 486) viewed the introduction of the kit into the home as positive, citing accessibility, timeliness and symptom control as benefits. The study also reported some carers lacked confidence and expressed concerns about administration of medicines in the home, an issue which the studies in the review reported here did not explore. Although a more limited form of 'just-in-case' medicine kits is used in the UK in the last few



days of life, more data are needed to consider the applicability of HEMKs in the context of different healthcare systems.

Couriering of medicines and the ability of palliative care patients and carers to be involved in collecting prescriptions or medicines were raised in two studies.<sup>17 18</sup> Solutions such as electronic prescribing and transfer to the pharmacy (in the UK, a system which now includes prescription of controlled drugs) and home delivery may be of value to overcome this. But one study (Kuruvilla *et al*)<sup>19</sup> highlighted that delivery systems are not free of charge and reduce contact time with the pharmacist, and a more recent survey highlighted electronic prescribing is far from universally available to prescribing nurses and pharmacists, suggesting further in-depth evaluation of these aspects of service delivery is required.<sup>35</sup>

Community palliative care specialist nurse prescribers were also reported to provide out-of-hours support and quicker medicine access in times of crisis. This form of out-of-hours care delivery is also recommended as a quality improvement priority by Williams *et al*<sup>36</sup> following their review of community palliative care incidents reported on a national database. However, evaluative data in the review reported here were confined to one small-scale study and therefore further evidence, including larger scale studies and insights of other stakeholders, is needed to endorse the value of nurse and pharmacist prescribing in this context.

The review also highlights that a variety of indicators have been used to measure medicine 'access', including patient-reported and nurse-reported length of time to receive medicines, delay/no delay experienced, number of pharmacies visited, stock held by pharmacies, supply chain issues, whether information on medicines is provided, as well as characterisation of a range of influences on access and supporting access to medicines. Drawing these systematically together may be useful in informing the design of future research and service evaluations of interventions to promote better access to medicines in the community setting.

Any overall conclusions of the review are limited by the quantity and quality of the research included in the review. Only a few models were studied, and only one study used a systems approach,<sup>18</sup> studying different components of service delivery as a whole—all other studies focused on one component only, which is not representative of how patients experience care and the process of accessing medicines—from prescription request through to dispensing, supply and information giving about medicines in the home. Medicine access provision by professionals such as generalist community nurses and family doctors is understudied, as well as more recent initiatives such as nurse, pharmacist and paramedic prescribing, and developments such as telephone support lines available out of hours. Most studies in the review were small scale and many only

included access as part of a broader focus, thereby further reducing the available data. Some models of care delivery—for example, hospice emergency kits and nurse prescribing—will vary between countries and therefore the transferability of findings across international systems of care delivery is also limited. Most studies focused on health professional self-report data and only four studies included views of patients.<sup>16–19</sup> There were very little data on outcomes of medicine access experiences and so comparison between models was not possible.

### Strengths and limitations

To our knowledge, the review is the first to systematically analyse international studies on the important issue of experiences of accessing palliative care medicines in the community. The review included a comprehensive search of grey literature sources, as well as consultation with experts to ensure unpublished literature was identified.

As the review was part of a larger study focused on medicine access within different models of community palliative care provision, we had an a priori focus on service delivery models that determined the structure of our review. The focus on models of care provision makes extrapolation of findings to different international contexts difficult; countries differ, for example, in the prescriptive authority afforded to nurses and pharmacists and the extent to which electronic prescribing is available for health professional prescribers to use.

We did not exclude studies on the basis of quality assessment, and the review is limited by the quantity and quality of research in this area (see above). Studies used heterogeneous indicators to measure experiences and outcomes of medicine access—therefore, comparisons between studies and models were not possible.

### CONCLUSIONS

Despite suggestions that accessing palliative care medicines to manage symptoms at home is problematic for patients, there is very little large-scale or in-depth research into these experiences and how models of service delivery influence access and subsequent clinical outcomes and health service use. Further research evaluating both established and more recent service delivery models is required, which includes patient and carer perspectives and the measurement of outcomes.

**Correction notice** This article has been corrected since it was first published. The article has been made Open access. Also, the article type has been changed to Systematic review.

**Acknowledgements** The authors thank Vicky Fenerty, the Research Engagement Librarian, at the University of Southampton for her advice on the search strategy for the review.

**Contributors** All authors (MO, NC, JB, AR, MIB, MS, SL) contributed to study design. MO performed the searches. MO, NC and SL contributed to data collection and data



analysis. MO and SL drafted the article. NC contributed to writing of the article. All authors revised the article critically for important intellectual content and were responsible for approval of the final manuscript. SL is responsible for the overall content as guarantor.

**Funding** The review reported here formed part of a larger study evaluating Access To Medicines (ActMed) for patients at end of life in the context of service delivery characteristics. ISRCTN: 12762104 | PROSPERO registration: CRD42017083563. Date of registration: 18 December 2017. Protocol: <https://www.journalslibrary.nihr.ac.uk/programmes/hshr/165223/#/>. This study was funded by the National Institute for Health Research (NIHR) (Health Services and Delivery Research Programme) (project number 16/52/23).

**Disclaimer** This study is funded by the National Institute for Health Research (NIHR) [Health Services & Delivery Research programme] (project number 16/52/23). The views expressed are those of the author(s) and not necessarily those of the NIHR or the Department of Health and Social Care. Professor Richardson is a National Institute for Health Research (NIHR) Senior Investigator. The views expressed in this article are those of the author(s) and not necessarily those of the NHS, the NIHR, or the Department of Health.

**Competing interests** None declared.

**Patient consent for publication** Not required.

**Provenance and peer review** Not commissioned; externally peer reviewed.

**Open access** This is an open access article distributed in accordance with the Creative Commons Attribution 4.0 Unported (CC BY 4.0) license, which permits others to copy, redistribute, remix, transform and build upon this work for any purpose, provided the original work is properly cited, a link to the licence is given, and indication of whether changes were made. See: <https://creativecommons.org/licenses/by/4.0/>.

**ORCID iD**

Susan Latter <http://orcid.org/0000-0003-0973-0512>

## REFERENCES

- Gomes B, Calanzani N, Gysels M, *et al*. Heterogeneity and changes in preferences for dying at home: a systematic review. *BMC Palliat Care* 2013;12:12–17.
- National Institute for Health and Care Excellence. *End of life care for adults (quality standard 13)*. London: NICE, 2011.
- Dawson S. Evaluation of nurse prescribing in a community palliative care team. *Nurse Prescribing* 2013;11:246–9.
- Campling N, Richardson A, Mulvey M, *et al*. Self-management support at the end of life: patients', carers' and professionals' perspectives on managing medicines. *Int J Nurs Stud* 2017;76:45–54.
- Brereton L, Clark J, Ingleton C, *et al*. What do we know about different models of providing palliative care? findings from a systematic review of reviews. *Palliat Med* 2017;31:781–97.
- Legislation.Gov.UK. The National health service (miscellaneous amendments relating to independent prescribing) regulations 2006, STAT. 913, 2006. Available: <https://www.legislation.gov.uk/ukksi/2006/913/made> [Accessed 10 Oct 2020].
- National Institute for Health and Care Excellence. *End of life care for adults: service delivery, NICE guideline NG142*, 2019.
- Moher D, Shamseer L, Clarke M, *et al*. Preferred reporting items for systematic review and meta-analysis protocols (PRISMA-P) 2015 statement. *Syst Rev* 2015;4:1.
- National Health Service. The National health service (miscellaneous amendments relating to independent prescribing) regulations 2006 No. 913, 2006. Available: <http://www.legislation.gov.uk/ukksi/2006/913/made> [Accessed 20 Dec 2019].
- Hong QN, Pluye P, Bregues S F. *Mixed methods appraisal tool (MMAT), version Registration of Copyright (#1148552)*. Canadian Intellectual Property Office, Industry Canada, 2018.
- Popay J, Roberts H, Sowden A. *Guidance on the conduct of narrative synthesis in systematic reviews: a product from the ESRC methods programme version 1*. Lancaster: Lancaster University, 2006.
- Latham K, Nyatanga B. Community palliative care clinical nurse specialists as independent prescribers: Part 1. *Br J Community Nurs* 2018;23:94–8.
- Latham K, Nyatanga B. Community palliative care clinical nurse specialists as independent prescribers: Part 2. *Br J Community Nurs* 2018;23:126–33.
- Ise Y, Morita T, Maehori N, *et al*. Role of the community pharmacy in palliative care: a nationwide survey in Japan. *J Palliat Med* 2010;13:733–7.
- Akram G, Bennie M, McKellar S, *et al*. Effective delivery of pharmaceutical palliative care: challenges in the community pharmacy setting. *J Palliat Med* 2012;15:317–21.
- Bennie M, Cocoran E, Trundle J. How community pharmacists could improve their role as providers of medicines information. *Eur J Palliat Care* 2013;4:188–91.
- Miller EJ. A mixed methods study investigating the community pharmacist's role in palliative care (doctoral thesis), University of Bradford. (University of BRADFORD website), 2017. Available: <https://bradscholars.brad.ac.uk/handle/10454/17392> [Accessed 10 Oct 2020].
- Lucey M, McQuillan R, MacCallion A, *et al*. Access to medications in the community by patients in a palliative setting. A systems analysis. *Palliat Med* 2008;22:185–9.
- Kuruville L, Weeks G, Eastman P, *et al*. Medication management for community palliative care patients and the role of a specialist palliative care pharmacist: a qualitative exploration of consumer and health care professional perspectives. *Palliat Med* 2018;32:1369–77.
- Bishop MF, Stephens L, Goodrich M, *et al*. Medication kits for managing symptomatic emergencies in the home: a survey of common hospice practice. *J Palliat Med* 2009;12:37–44.
- Walker KA, McPherson ML. Perceived value and cost of providing emergency medication kits to home hospice patients in Maryland. *Am J Hosp Palliat Care* 2010;27:254–60.
- Leigh AE, Burgio KL, Williams BR, *et al*. Hospice emergency kit for veterans: a pilot study. *J Palliat Med* 2013;16:356–61.
- Tait PA, Gray J, Hakendorf P, *et al*. Community pharmacists: a forgotten resource for palliative care. *BMJ Support Palliat Care* 2013;3:436–43.
- Sheehy-Skeffington B, McLean S, Bramwell M, *et al*. Caregivers experiences of managing medications for palliative care patients at the end of life: a qualitative study. *Am J Hosp Palliat Care* 2014;31:148–54.
- Latter S, Hopkinson JB, Richardson A, *et al*. How can we help family carers manage pain medicines for patients with advanced cancer? A systematic review of intervention studies. *BMJ Support Palliat Care* 2016;6:263–75.
- Wilson E, Caswell G, Turner N, *et al*. Managing medicines for patients dying at home: a review of family caregivers' experiences. *J Pain Symptom Manage* 2018;56:962–74.
- Latif A, Faull C, Wilson E. Managing medicines for patients with palliative care needs being cared for at home: insights for community pharmacy professionals. *Pharm J* 2020.
- National Institute for Health and Care Excellence. *Community pharmacies: promoting health and well-being, NICE Guideline (NG102)*, 2018.
- Mitchell GK. How well do general practitioners deliver palliative care? A systematic review. *Palliat Med* 2002;16:457–64.
- BMA. British Medical association end-of-life care and physician assisted dying volume 3: reflections and recommendations, 2016. Available: <https://www.bma.org.uk/>

- media/1418/bma-end-of-life-care-and-physician-assisted-dying-volume-three-report.pdf [Accessed 10 Oct 2020].
- 31 Akram G, Corcoran ED, MacRobbie A, *et al.* Developing a model for pharmaceutical palliative care in rural Areas-Experience from Scotland. *Pharmacy* 2017;5. doi:10.3390/pharmacy5010006. [Epub ahead of print: 16 Feb 2017].
  - 32 Royal Pharmaceutical Society Wales. Palliative & end of life care, 2018. Available: <https://www.rpharms.com/Portals/0/RPS%20document%20library/Open%20access/Policy/RPS%20Wales%20Palliative%20and%20End%20of%20Life%20Care%20Policy%20WEB.pdf?ver=2019-06-17-120534-630>
  - 33 National Palliative and End of Life Care Partnership. Ambitions for palliative and end of life care: a national framework for local action 2015-2020, 2015. Available: <http://endoflifecareambitions.org.uk/wp-content/uploads/2015/09/Ambitions-for-Palliative-and-End-of-Life-Care.pdf> [Accessed 10 Oct 2020].
  - 34 Rosenberg JP, Bullen T, Maher K. Supporting family caregivers with palliative symptom management: a qualitative analysis of the provision of an emergency medication kit in the home setting. *Am J Hosp Palliat Care* 2015;32:484–9.
  - 35 Latter S, Campling N, Birtwistle J, *et al.* Supporting patient access to medicines in community palliative care: on-line survey of health professionals' practice, perceived effectiveness and influencing factors. *BMC Palliat Care* 2020;19:148.
  - 36 Williams H, Donaldson SL, Noble S, *et al.* Quality improvement priorities for safer out-of-hours palliative care: lessons from a mixed-methods analysis of a national incident-reporting database. *Palliat Med* 2019;33:346–56.

**Online supplemental material Table 1. Search terms for MEDILINE(EBSCO)**


---

S1	(MH "Palliative Care")
S2	(MH "Terminal Care")
S3	palliative n3 care
S4	terminal N3 care
S5	"end of life" or EOL
S6	palliat*
S7	terminal and patients
S8	medicat*
S9	medicine*
S10	drug*
S11	(MH "Pharmacies")
S12	(MH "Community Pharmacy Services")
S13	access*
S14	suppl*
S15	dispens*
S16	distribut*
S17	availab*
S18	deliver*
S19	administ*
S20	"out of hours"
S21	prescri*
S22	pharmac*
S23	primary N3 care
S24	primary health care
S25	home
S26	communit*
S27	general practice
S28	(MH "General Practice")
S29	"Family practice"
S30	local N3 Pharmac*
S31	"Community practice"
S32	Community N3 Pharmac*
S33	S1 OR S2 OR S3 OR S4 OR S5 OR S6 OR S7
S34	S8 OR S9 OR S10
S35	S11 OR S12 OR S13 OR S14 OR S15 OR S16 OR S17 OR S18 OR S19 OR S20 OR S21 OR S22
S36	S23 OR S24 OR S25 OR S26 OR S27 OR S28 OR S29 OR S30 OR S31 OR S32
S37	S33 AND S34 AND S35 AND S36
Limiters - Date of Publication: 20060101-20180331; English Language; Human; Age Related: All Adult: 19+ years	

---

MH: medical subject headings, N3: allowing 0 to 3 words between the words

Online supplemental material Table 2 Details of included studies

Reference, country	Model/s of service delivery	Study Aim and Design	Participants and sample size	Results and findings related to access
Lucey et al. 2008 Ireland	Specialist palliative home care, including community pharmacy, General Practice and specialist home care nursing.	A systems analysis to highlight factors causing delays in the process of obtaining medications for patients under the care of a specialist palliative home care provider  Quantitative Questionnaires and structured 'observation' data	1) Survey 111 GPs registered in North Dublin 57 Retail pharmacists registered in North Dublin 22 patients who were referred to one hospice home care team  2) Observational cohort study (12 reports by nurses in specialist care team)	1) Perceived factors causing delay in medicine access process: <b>GPs:</b> need to clarify the advice given by the home care team (30.6%); the inability of someone to collect the prescription (23.4%); the patient being unable to attend the surgery (18.9%) <b>Pharmacists:</b> some specialist palliative care medications were not stocked (49.1%), difficulty in obtaining the supply of these types of medications (33%); medication not being available on the medical reimbursement system (GMS) (49%) <b>Patient results:</b> received their medication without delay (54%); had not been advised to change their medication by the home care team (46%) 2) Nurse reported 12 delays > 24 hours over a 12 week period; 11 delays were > 48 hours, and 6 delays were due to medication not being in stock.
Bishop et al. 2009 USA	Hospice emergency medication kit (HEMK)	To survey all active hospice programs about their use of HEMKs  Quantitative Telephone survey	22 Clinical nurse directors or nurse managers in one state	86% of agencies reported HEMK often averted hospital or emergency department visits.
Walker and McPherson 2010 USA	Hospice emergency medication kit (HEMK)	To compare perceptions of hospice managers and clinicians regarding the value of Emergency Medication Kit (HEMK) and to assess outcomes  Quantitative Surveys	1) 21 Clinical directors (or equivalent) at hospices in one state  2) Hospice A (with HEMK) = 154 patients Hospice B (without HEMK) = 103 patients	1) 14 of 21 hospices reported using HEM. Perceived value of HEMK were preventing emergency department visits (69%), unscheduled nursing visits (54%) and pharmacy deliveries (77%) as well as increased satisfaction of both patients and nurses (both 100%). 2) Estimated time to symptom relief was shorter in Hospice A (with kits) patients than in Hospice B; Hospice A =56% received symptom relief within 30 minutes but Hospice B: none were satisfactorily treated in the same duration.



Ise et al. 2010 Japan	Community pharmacy	Quantitative Questionnaire survey  To evaluate; (1) the availability of and the experience of pharmacists providing narcotics (opioids) through community pharmacies (2) availability of patient counselling by pharmacists; (3) perceived difficulties in treating cancer patients with opioids; (4) useful strategies to make opioids more available to patients	1036 community pharmacies as a representative national sample, (response rate: 34.5%).	After-hours nurses perceived caller satisfaction was significantly higher in Hospice A patients with a HEMK compared to both Hospice B and Hospice A patients without a HEMK. 77% of community pharmacies had a narcotics retailer license, 50% received prescriptions for and prepared narcotics each month. Half of the pharmacists reported that they did not counsel patients, primarily because they lacked information about the patient Pharmacists reported communicating with terminally ill cancer patients was extremely difficult. 76% of community pharmacists felt it was important to be able to return opioids to wholesalers to make opioids more easily available to patients
Akram et al. 2012 UK	Community pharmacy	Understand the provision of enhanced service community pharmacies (Community Pharmacy Palliative Care Network pharmacies offered specialised palliative medicines stock, urgent medicines delivery service and support to other health care professionals)  Qualitative Focus group interviews	35 pharmacists in 5 focus groups	Barriers for pharmacists providing palliative care medicines in community pharmacy: 1) Medication supply stock issue; medicines not listed; out-of-hours prescriptions; prescribing error with controlled drugs; infrequent use of delivery service provided by other staff 2) Communication <ul style="list-style-type: none"> <li>Communication issues across the palliative care team (e.g. necessity of contacting pharmacy in advance to prevent supply problems, poor communication during transition of hospital admission/discharge)</li> <li>Membership in the CPPC Network was seen as supportive but also meant unfamiliar patients were referred to them</li> </ul> 3) Education and training

Bennie et al. 2013	Community pharmacy	To investigate how older palliative care patients and their carers access information about their medication and what knowledge they have of community pharmacy services	14 patients (aged 65–79) 13 carers (aged 57–74) took part in six separate focus groups.	<ul style="list-style-type: none"> <li>▪ Limited understanding of the role by other PC team members</li> <li>▪ Better training for counter assistants and locum pharmacist</li> </ul> <p>Availability of routine resource for pharmacists to support clinical practice (e.g. web-page)</p> <p>1) Access to medication information</p> <ul style="list-style-type: none"> <li>▪ Patient information leaflets appeared to be most common source of information about drugs</li> <li>▪ Participants preferred face-to-face interactions when possible</li> </ul> <p>2) Study participants had limited knowledge of available help for them from their community pharmacist regarding their medications; a more proactive role of community pharmacists in disseminating relevant and tailored information to older palliative care patients was desired.</p>
Leigh et al. 2013 USA	Hospice emergency medication kits (HEMK)	Qualitative Focus group interviews To evaluate Hospice Emergency Kit (HEK), medication utilization, safety, diversion and perceived impact	76 deceased veterans discharged to home hospice  78 hospice nurses in 16 community hospice agencies (49% response rate)	59% of the nurses felt HEMKs were helpful 100% of the time (mean 84.2%) and 93% felt an emergency visit or hospitalization was avoided by having the kit in the home.
Miller 2017 UK	Community pharmacy	Quantitative Chart abstraction and questionnaire survey To investigate the delivery of palliative care services by community pharmacists in Sheffield  Mixed-methods Prescription analysis; customer survey; health care professional interviews	1) 5 community pharmacies 2) 75 prescription data collection forms 3) 55 customers 4) Pharmacists: 6 A) Community pharmacists who participated in Phase 1 = 5 B) Working in intermediate care = 1 5) Doctors: 4	1) Stock availability led to delays: approximately 1 in 5 customers had to go to more than one pharmacy to get urgently required palliative care medication, with one in two customers who were referred by a healthcare professional needing to go to more than one pharmacy. 2) No evidence that errors on prescriptions led to a delay in obtaining palliative medication. 3) The median time taken for accessing urgent palliative care medicines was significantly longer for non-commissioned service pharmacies (5 hours) compared to pharmacies commissioned to hold stock of palliative

			<p>A) GP = 3  B) Specialist palliative care doctor = 1  4) Nurses: 6  A) District/community = 5  B) Specialist palliative care nurse = 1</p>	<p>care medicines (10 minutes p=0.002)  4) Pharmacies drew up their own local list of palliative care medications that worked with local GP surgeries to keep in stock and had similar minimum times for accessing medication as commissioned service pharmacies.</p> <p>Factors facilitating or limiting medicine access  1) Skills, knowledge and training for anticipating needs  2) Collaborative relationships for planning ahead for medicine stock.</p> <p>Themes from the focus groups:  • Gaps in access to medicines/resources / information:  Lack of access to pharmacy stock, medicines information, and patient medical records, especially outside business hours and difficulties for patients living in rural and remote areas were particular barriers highlighted by focus group participants.</p>
Kuruville et al. 2018 Australia	Community palliative care services	<p>To explore the perspective of stakeholders about gaps in the current model of community palliative care services and assess opinion on the role of a specialist palliative care pharmacist</p> <p>Qualitative Focus group interviews</p>	<p>Healthcare professionals (n=12):  3 Palliative care medical consultants  1 Palliative care medical-registrar  1 GP  1 Palliative care nurse-consultant  1 Palliative care nurse-practitioner  2 Community nurses  1 Hospital pharmacist  1 Community pharmacist  Palliative care patients/caregivers (n=8)  6 Community specialist nurse non-medical independent prescribers</p>	
Latham and Nyatanga 2018 UK	Community specialist nurse independent prescribers	<p>To explore the lived experience of clinical nurse specialists working as independent prescribers</p> <p>Qualitative Interviews</p>		<p>1) Perceived benefits of nurse independent prescribing:  A) Helping patients in times of crisis  B) Being available when others are not (out-of-hours)  2) Barriers to prescribing practice:  A) Anxiety about writing prescriptions incorrectly  B) Inadequate knowledge and negative/unfavourable attitudes of other HCPs  C) Inadequate access to patients' medical information</p>





Online supplemental material Table 3. Quality assessments of included studies.

Qualitative studies	1.1. Is the qualitative approach appropriate to answer the research question?	1.2. Are the qualitative data collection methods adequate to address the research question?	1.3. Are the findings adequately derived from the data?	1.4. Is the interpretation of results sufficiently substantiated by data?	1.5. Is there coherence between qualitative data sources, collection, analysis and interpretation?
Akram et al. 2012	Yes	Yes 35 pharmacists in 5 focus groups Verbatim transcription	Yes Framework Analysis Independent coding and validation process	Yes Quotation is adequately employed for each theme.	Yes
Bennie et al. 2013	Yes	Can't Tell No description of the topic guide.	Can't Tell No description of the method of qualitative analysis	Yes Quotation is adequately employed for each theme.	Yes
Kuruville et al. 2018	Yes	Yes	Yes Framework Analysis Independent coding and discussion of discrepancies	Yes	Yes
Latham and Nyatanga 2018	Yes	Can't Tell Full details of purposive sampling not given. Interview schedule validation unclear.	Yes Constant comparative method is reasonable for interpretative phenomenology.	Yes Quotation is adequately employed for each theme.	Yes
Quantitative studies	4.1. Is the sampling strategy relevant to address the research question?	4.2. Is the sample representative of the target population?	4.3. Are the measurements appropriate?	4.4. Is the risk of nonresponse bias low?	4.5. Is the statistical analysis appropriate to answer the research question?

Lucey et al 2008	Yes All GPs, pharmacists in one city area; all patients over a 3 month period in the hospice; unclear details of if / how nurses were sampled.	Can't Tell Details of respondents are not given, other than as part of the target sample	Can't Tell Details of the development of the questionnaires are not given	No Response rates were: GPs 41%; pharmacists 33% and patients 38.5%.	Yes
Bishop et al. 2009	Yes Sampling process is adequate; surveyed all active programs in the target area	Can't Tell Clear description of the sample and reasonable as a local study but difficult to understand if generalisable across country or globally.	Yes The survey question was reviewed by a third party and seems to be reasonable. Data collection method of telephone interview was not described.	Yes All candidates were contacted and response rate of the survey was 22/22. Results from 1 program were not included due to limited response.	Yes Descriptive statistics
Walker and McPherson. 2010	Can't Tell 1) Sampling process for the survey is adequate; surveyed all active programs in the target area. 2) No details of the method of sampling hospices or nurses within them for the comparative study.	Can't Tell 1) Details of survey respondent sample and hospices are lacking. 2) No details of hospices or nurses taking part in the comparative study are given.	Yes 1) Survey questions seem to be reasonable though it was only internally reviewed. Data collection method of telephone interview was not described. 2) Methods for comparing frequency, estimated cost and client satisfaction were reasonable.	Yes 1) 21/23 programs in the area participated and 14 reported using EMK 2) No details are given on response rates of nurses in the hospices	Yes Descriptive statistics
Ise et al. 2010	Yes Random sampling from a community pharmacist database	Yes Clear description of the sample with adequate methods.	Yes The survey question was clearly defined and seemed to be reasonable though it was only internally reviewed.	No Response rate was low at 34.5%.	Yes

Leigh et al. 2013	Can't Tell No details of sampling method of hospice agencies for nurses	No Only 77% had cared for a veteran with the institution's HEMK Reasons why eligible individuals chose not to participate were not described.	Can't Tell No details of the development of the nurse questionnaire	No Response rate of the questionnaire was 49% (78/160); authors acknowledge there may have been a positive response bias	Yes
<b>Mixed-method study</b>	<b>5.1. Is there an adequate rationale for using a mixed method design to address the research question?</b>	<b>5.2. Are the different components of the study effectively integrated to answer the research question?</b>	<b>5.3. Are the outputs of the integration of qualitative and quantitative components adequately interpreted?</b>	<b>5.4. Are divergences and inconsistencies between quantitative and qualitative results adequately addressed?</b>	<b>5.5. Do the different components of the study adhere to the quality criteria of each tradition of the methods involved?</b>
Miller 2017	Yes	Yes	Yes	Can't tell Divergences and inconsistencies were not described in much detail.	Yes 1) QUAN (Observational study): The sampling strategy was reasonable but limited participants. 2) QUAL (interviews): There was a clear description and reasonable methods.

**Online supplemental material Table 1. Search terms for MEDILINE(EBSCO)**


---

S1	(MH "Palliative Care")
S2	(MH "Terminal Care")
S3	palliative n3 care
S4	terminal N3 care
S5	"end of life" or EOL
S6	palliat*
S7	terminal and patients
S8	medicat*
S9	medicine*
S10	drug*
S11	(MH "Pharmacies")
S12	(MH "Community Pharmacy Services")
S13	access*
S14	suppl*
S15	dispens*
S16	distribut*
S17	availab*
S18	deliver*
S19	administ*
S20	"out of hours"
S21	prescri*
S22	pharmac*
S23	primary N3 care
S24	primary health care
S25	home
S26	communit*
S27	general practice
S28	(MH "General Practice")
S29	"Family practice"
S30	local N3 Pharmac*
S31	"Community practice"
S32	Community N3 Pharmac*
S33	S1 OR S2 OR S3 OR S4 OR S5 OR S6 OR S7
S34	S8 OR S9 OR S10
S35	S11 OR S12 OR S13 OR S14 OR S15 OR S16 OR S17 OR S18 OR S19 OR S20 OR S21 OR S22
S36	S23 OR S24 OR S25 OR S26 OR S27 OR S28 OR S29 OR S30 OR S31 OR S32
S37	S33 AND S34 AND S35 AND S36
Limiters - Date of Publication: 20060101-20180331; English Language; Human; Age Related: All Adult: 19+ years	

---

MH: medical subject headings, N3: allowing 0 to 3 words between the words



Online supplemental material Table 2 Details of included studies

Reference, country	Model/s of service delivery	Study Aim and Design	Participants and sample size	Results and findings related to access
Lucey et al. 2008 Ireland	Specialist palliative home care, including community pharmacy, General Practice and specialist home care nursing.	A systems analysis to highlight factors causing delays in the process of obtaining medications for patients under the care of a specialist palliative home care provider  Quantitative Questionnaires and structured 'observation' data	1) Survey 111 GPs registered in North Dublin 57 Retail pharmacists registered in North Dublin 22 patients who were referred to one hospice home care team  2) Observational cohort study (12 reports by nurses in specialist care team)	1) Perceived factors causing delay in medicine access process: <b>GPs:</b> need to clarify the advice given by the home care team (30.6%); the inability of someone to collect the prescription (23.4%); the patient being unable to attend the surgery (18.9%) <b>Pharmacists:</b> some specialist palliative care medications were not stocked (49.1%), difficulty in obtaining the supply of these types of medications (33%); medication not being available on the medical reimbursement system (GMS) (49%) <b>Patient results:</b> received their medication without delay (54%); had not been advised to change their medication by the home care team (46%) 2) Nurse reported 12 delays > 24 hours over a 12 week period; 11 delays were > 48 hours, and 6 delays were due to medication not being in stock.
Bishop et al. 2009 USA	Hospice emergency medication kit (HEMK)	To survey all active hospice programs about their use of HEMKs  Quantitative Telephone survey	22 Clinical nurse directors or nurse managers in one state	86% of agencies reported HEMK often averted hospital or emergency department visits.
Walker and McPherson 2010 USA	Hospice emergency medication kit (HEMK)	To compare perceptions of hospice managers and clinicians regarding the value of Emergency Medication Kit (HEMK) and to assess outcomes  Quantitative Surveys	1) 21 Clinical directors (or equivalent) at hospices in one state  2) Hospice A (with HEMK) = 154 patients Hospice B (without HEMK) = 103 patients	1) 14 of 21 hospices reported using HEM. Perceived value of HEMK were preventing emergency department visits (69%), unscheduled nursing visits (54%) and pharmacy deliveries (77%) as well as increased satisfaction of both patients and nurses (both 100%). 2) Estimated time to symptom relief was shorter in Hospice A (with kits) patients than in Hospice B; Hospice A =56% received symptom relief within 30 minutes but Hospice B: none were satisfactorily treated in the same duration.

Ise et al. 2010 Japan	Community pharmacy	Quantitative Questionnaire survey  To evaluate; (1) the availability of and the experience of pharmacists providing narcotics (opioids) through community pharmacies (2) availability of patient counselling by pharmacists; (3) perceived difficulties in treating cancer patients with opioids; (4) useful strategies to make opioids more available to patients	1036 community pharmacies as a representative national sample, (response rate: 34.5%).	After-hours nurses perceived caller satisfaction was significantly higher in Hospice A patients with a HEMK compared to both Hospice B and Hospice A patients without a HEMK. 77% of community pharmacies had a narcotics retailer license, 50% received prescriptions for and prepared narcotics each month. Half of the pharmacists reported that they did not counsel patients, primarily because they lacked information about the patient Pharmacists reported communicating with terminally ill cancer patients was extremely difficult. 76% of community pharmacists felt it was important to be able to return opioids to wholesalers to make opioids more easily available to patients
Akram et al. 2012 UK	Community pharmacy	Understand the provision of enhanced service community pharmacies (Community Pharmacy Palliative Care Network pharmacies offered specialised palliative medicines stock, urgent medicines delivery service and support to other health care professionals)  Qualitative Focus group interviews	35 pharmacists in 5 focus groups	Barriers for pharmacists providing palliative care medicines in community pharmacy: 1) Medication supply stock issue; medicines not listed; out-of-hours prescriptions; prescribing error with controlled drugs; infrequent use of delivery service provided by other staff 2) Communication <ul style="list-style-type: none"> <li>Communication issues across the palliative care team (e.g. necessity of contacting pharmacy in advance to prevent supply problems, poor communication during transition of hospital admission/discharge)</li> <li>Membership in the CPPC Network was seen as supportive but also meant unfamiliar patients were referred to them</li> </ul> 3) Education and training

Bennie et al. 2013	Community pharmacy	To investigate how older palliative care patients and their carers access information about their medication and what knowledge they have of community pharmacy services	14 patients (aged 65–79) 13 carers (aged 57–74) took part in six separate focus groups.	<ul style="list-style-type: none"> <li>▪ Limited understanding of the role by other PC team members</li> <li>▪ Better training for counter assistants and locum pharmacist</li> </ul> <p>Availability of routine resource for pharmacists to support clinical practice (e.g. web-page)</p> <p>1) Access to medication information</p> <ul style="list-style-type: none"> <li>▪ Patient information leaflets appeared to be most common source of information about drugs</li> <li>▪ Participants preferred face-to-face interactions when possible</li> </ul> <p>2) Study participants had limited knowledge of available help for them from their community pharmacist regarding their medications; a more proactive role of community pharmacists in disseminating relevant and tailored information to older palliative care patients was desired.</p>
Leigh et al. 2013 USA	Hospice emergency medication kits (HEMK)	Qualitative Focus group interviews To evaluate Hospice Emergency Kit (HEK), medication utilization, safety, diversion and perceived impact	76 deceased veterans discharged to home hospice  78 hospice nurses in 16 community hospice agencies (49% response rate)	59% of the nurses felt HEMKs were helpful 100% of the time (mean 84.2%) and 93% felt an emergency visit or hospitalization was avoided by having the kit in the home.
Miller 2017 UK	Community pharmacy	Quantitative Chart abstraction and questionnaire survey To investigate the delivery of palliative care services by community pharmacists in Sheffield  Mixed-methods Prescription analysis; customer survey; health care professional interviews	1) 5 community pharmacies 2) 75 prescription data collection forms 3) 55 customers 4) Pharmacists: 6 A) Community pharmacists who participated in Phase 1 = 5 B) Working in intermediate care = 1 5) Doctors: 4	1) Stock availability led to delays: approximately 1 in 5 customers had to go to more than one pharmacy to get urgently required palliative care medication, with one in two customers who were referred by a healthcare professional needing to go to more than one pharmacy. 2) No evidence that errors on prescriptions led to a delay in obtaining palliative medication. 3) The median time taken for accessing urgent palliative care medicines was significantly longer for non-commissioned service pharmacies (5 hours) compared to pharmacies commissioned to hold stock of palliative

			<p>A) GP = 3  B) Specialist palliative care doctor = 1  4) Nurses: 6  A) District/community = 5  B) Specialist palliative care nurse = 1</p>	<p>care medicines (10 minutes p=0.002)  4) Pharmacies drew up their own local list of palliative care medications that worked with local GP surgeries to keep in stock and had similar minimum times for accessing medication as commissioned service pharmacies.</p> <p>Factors facilitating or limiting medicine access  1) Skills, knowledge and training for anticipating needs  2) Collaborative relationships for planning ahead for medicine stock.</p> <p>Themes from the focus groups:  • Gaps in access to medicines/resources / information:  Lack of access to pharmacy stock, medicines information, and patient medical records, especially outside business hours and difficulties for patients living in rural and remote areas were particular barriers highlighted by focus group participants.</p>
Kuruville et al. 2018 Australia	Community palliative care services	<p>To explore the perspective of stakeholders about gaps in the current model of community palliative care services and assess opinion on the role of a specialist palliative care pharmacist</p> <p>Qualitative Focus group interviews</p>	<p>Healthcare professionals (n=12):  3 Palliative care medical consultants  1 Palliative care medical-registrar  1 GP  1 Palliative care nurse-consultant  1 Palliative care nurse-practitioner  2 Community nurses  1 Hospital pharmacist  1 Community pharmacist  Palliative care patients/caregivers (n=8)  6 Community specialist nurse non-medical independent prescribers</p>	
Latham and Nyatanga 2018 UK	Community specialist nurse independent prescribers	<p>To explore the lived experience of clinical nurse specialists working as independent prescribers</p> <p>Qualitative Interviews</p>		<p>1) Perceived benefits of nurse independent prescribing:  A) Helping patients in times of crisis  B) Being available when others are not (out-of-hours)  2) Barriers to prescribing practice:  A) Anxiety about writing prescriptions incorrectly  B) Inadequate knowledge and negative/unfavourable attitudes of other HCPs  C) Inadequate access to patients' medical information</p>





Online supplemental material Table 3. Quality assessments of included studies.

Qualitative studies	1.1. Is the qualitative approach appropriate to answer the research question?	1.2. Are the qualitative data collection methods adequate to address the research question?	1.3. Are the findings adequately derived from the data?	1.4. Is the interpretation of results sufficiently substantiated by data?	1.5. Is there coherence between qualitative data sources, collection, analysis and interpretation?
Akram et al. 2012	Yes	Yes 35 pharmacists in 5 focus groups Verbatim transcription	Yes Framework Analysis Independent coding and validation process	Yes Quotation is adequately employed for each theme.	Yes
Bennie et al. 2013	Yes	Can't Tell No description of the topic guide.	Can't Tell No description of the method of qualitative analysis	Yes Quotation is adequately employed for each theme.	Yes
Kuruville et al. 2018	Yes	Yes	Yes Framework Analysis Independent coding and discussion of discrepancies	Yes	Yes
Latham and Nyatanga 2018	Yes	Can't Tell Full details of purposive sampling not given. Interview schedule validation unclear.	Yes Constant comparative method is reasonable for interpretative phenomenology.	Yes Quotation is adequately employed for each theme.	Yes
Quantitative studies	4.1. Is the sampling strategy relevant to address the research question?	4.2. Is the sample representative of the target population?	4.3. Are the measurements appropriate?	4.4. Is the risk of nonresponse bias low?	4.5. Is the statistical analysis appropriate to answer the research question?

Lucey et al 2008	Yes All GPs, pharmacists in one city area; all patients over a 3 month period in the hospice; unclear details of if / how nurses were sampled.	Can't Tell Details of respondents are not given, other than as part of the target sample	Can't Tell Details of the development of the questionnaires are not given	No Response rates were: GPs 41%; pharmacists 33% and patients 38.5%.	Yes
Bishop et al. 2009	Yes Sampling process is adequate; surveyed all active programs in the target area	Can't Tell Clear description of the sample and reasonable as a local study but difficult to understand if generalisable across country or globally.	Yes The survey question was reviewed by a third party and seems to be reasonable. Data collection method of telephone interview was not described.	Yes All candidates were contacted and response rate of the survey was 22/22. Results from 1 program were not included due to limited response.	Yes Descriptive statistics
Walker and McPherson. 2010	Can't Tell 1) Sampling process for the survey is adequate; surveyed all active programs in the target area. 2) No details of the method of sampling hospices or nurses within them for the comparative study.	Can't Tell 1) Details of survey respondent sample and hospices are lacking. 2) No details of hospices or nurses taking part in the comparative study are given.	Yes 1) Survey questions seem to be reasonable though it was only internally reviewed. Data collection method of telephone interview was not described. 2) Methods for comparing frequency, estimated cost and client satisfaction were reasonable.	Yes 1) 21/23 programs in the area participated and 14 reported using EMK 2) No details are given on response rates of nurses in the hospices	Yes Descriptive statistics
Ise et al. 2010	Yes Random sampling from a community pharmacist database	Yes Clear description of the sample with adequate methods.	Yes The survey question was clearly defined and seemed to be reasonable though it was only internally reviewed.	No Response rate was low at 34.5%.	Yes

Leigh et al. 2013	Can't Tell No details of sampling method of hospice agencies for nurses	No Only 77% had cared for a veteran with the institution's HEMK Reasons why eligible individuals chose not to participate were not described.	Can't Tell No details of the development of the nurse questionnaire	No Response rate of the questionnaire was 49% (78/160); authors acknowledge there may have been a positive response bias	Yes
Mixed-method study	5.1. Is there an adequate rationale for using a mixed method design to address the research question?	5.2. Are the different components of the study effectively integrated to answer the research question?	5.3. Are the outputs of the integration of qualitative and quantitative components adequately interpreted?	5.4. Are divergences and inconsistencies between quantitative and qualitative results adequately addressed?	5.5. Do the different components of the study adhere to the quality criteria of each tradition of the methods involved?
Miller 2017	Yes	Yes	Yes	Can't tell Divergences and inconsistencies were not described in much detail.	Yes 1) QUAN (Observational study): The sampling strategy was reasonable but limited participants. 2) QUAL (interviews): There was a clear description and reasonable methods.